

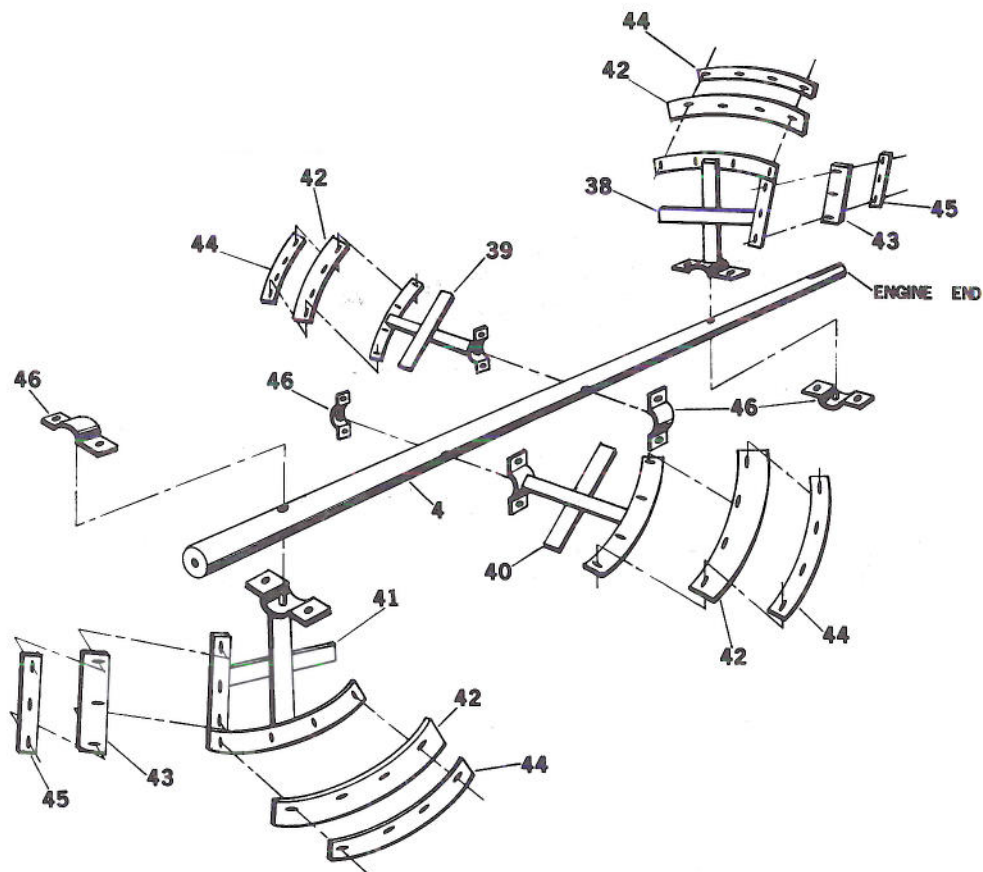
FRAME AND DRUM ASSEMBLY

ITEM	DESCRIPTION	QTY	601PM	801PM
			PART NO.	PART NO.
1	Frame	1	24204	26602
2	Cowl - rear	1	24018	24018
3	Cowl - front	1	27574	27574
5	Trunnion Housing	2	24021	24021
6	Grease Fitting	4	46042	46042
7	Grease Fitting Cap	4	47001	47001
8	Bearing	2	32003	32003
9	Double Spacer	2	26230	26230
10	Seal	6	24022	24022
11	Single Spacer	6	24017	24017
12	Drum	1	24202	24203
13	Dump Handle	1	24406	24406
14	Hand Grip	1	47000	47000
15	Guard Lifter	1	24126	24126
16	Guard	1	24208	24211
17	Tow Pole	1	26096	26096
18	Drum Latch Spacer	1	24027 26229	26229
19	Drum Latch	1	26228	26228
20	Inner Seal	2	26279	26279
21	Safety Chain Kit	1	*	21757

*Safety Chain Kit available only on 601PM with optional towing package

NOTE: If your mixer has a WELDED ON bearing housing you must purchase this bearing kit version: ST22153
The ST23432 featured here is for the BOLT on version ONLY.

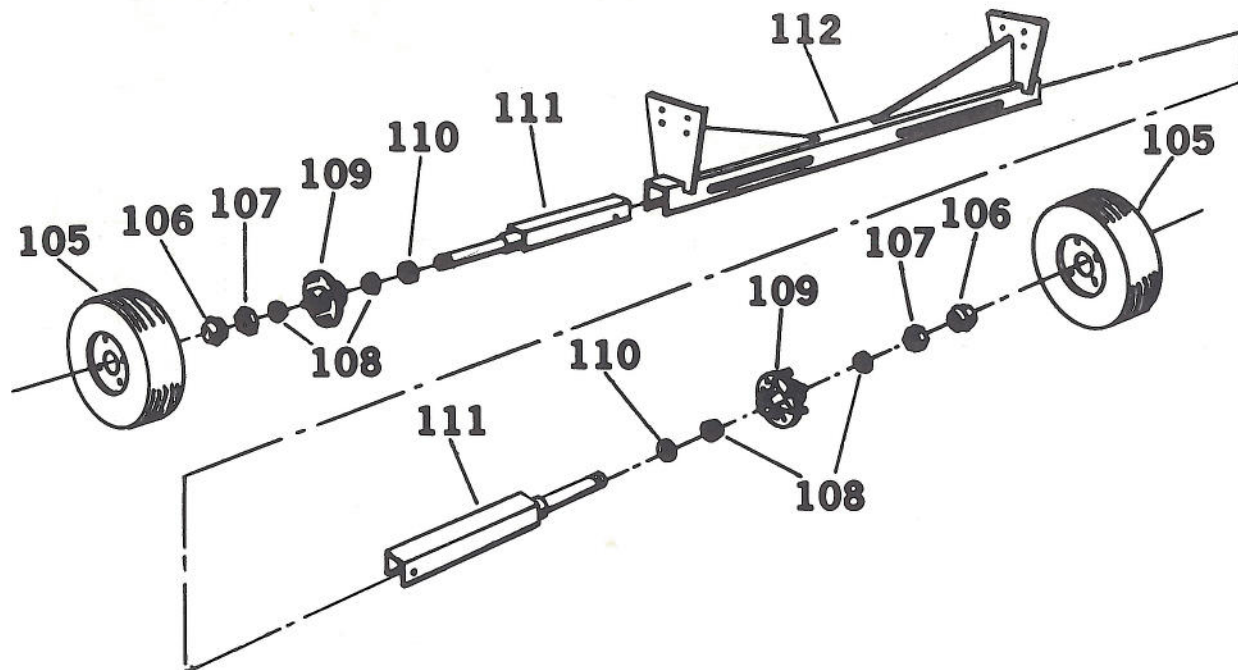
801 PM PADDLE ASSEMBLY



ITEM	DESCRIPTION	QTY	PART NO.
4	Paddle Shaft	1	24212
38	Paddle, E.E.	1	24222
39	Paddle, E.E.C.	1	24221
40	Paddle T.P.C.	1	24220
41	Paddle T.P.E.	1	24219
42	Blade, rubber - center	4	24106*
42	Blade, steel - center	4	24109*
43	Blade, rubber - end	2	24033*
43	Blade, steel - end	2	24073*
44	Backer, center	4	24104*
45	Backer, end	2	24031*
46	Paddle Clamp	4	24107
	Blade Set - rubber	1	21047
	Blade Set - steel	1	21065
	Backer Set	1	21048
	Paddle Assembly	1	21199

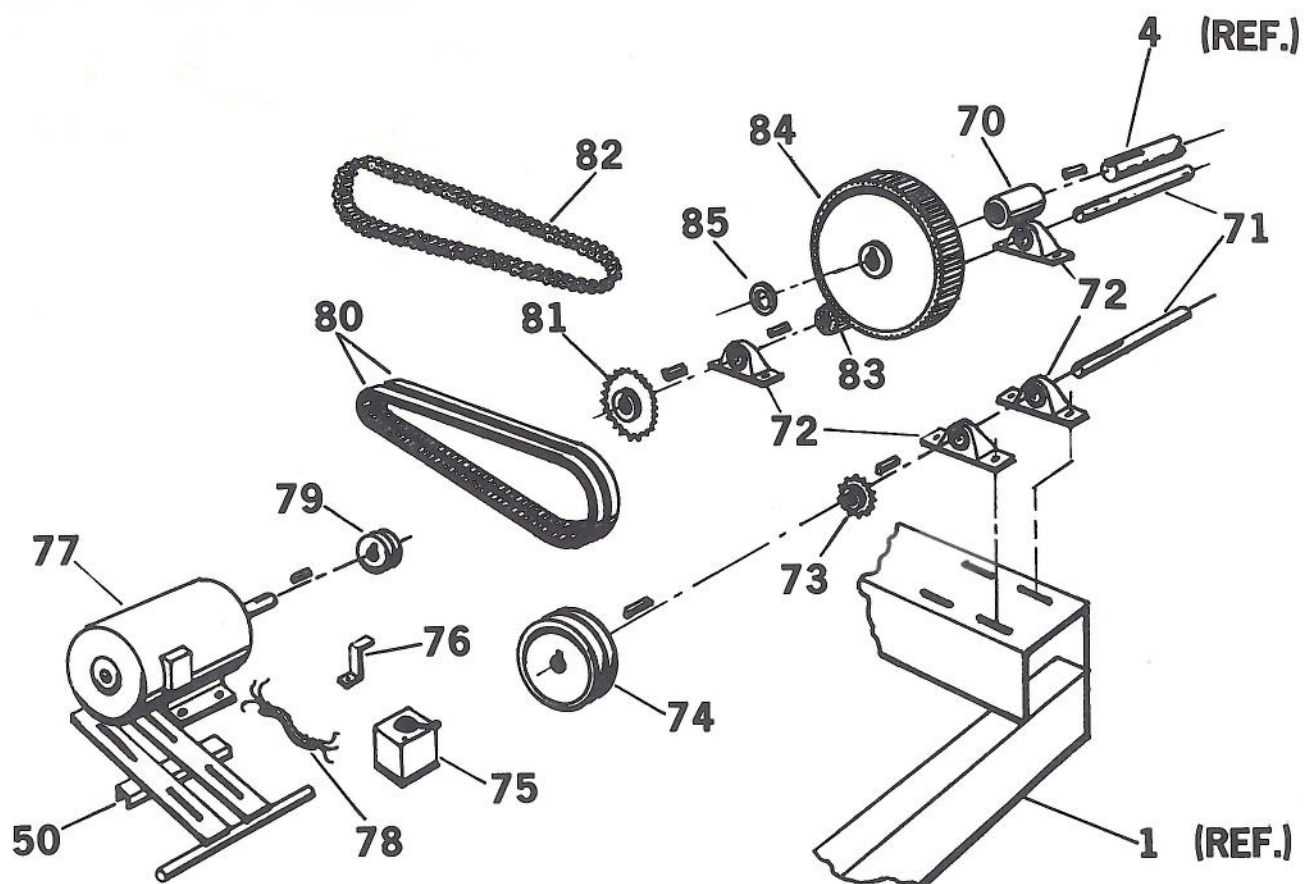
*For convenience, order blades and backers in sets.

801 PM STANDARD AXLE



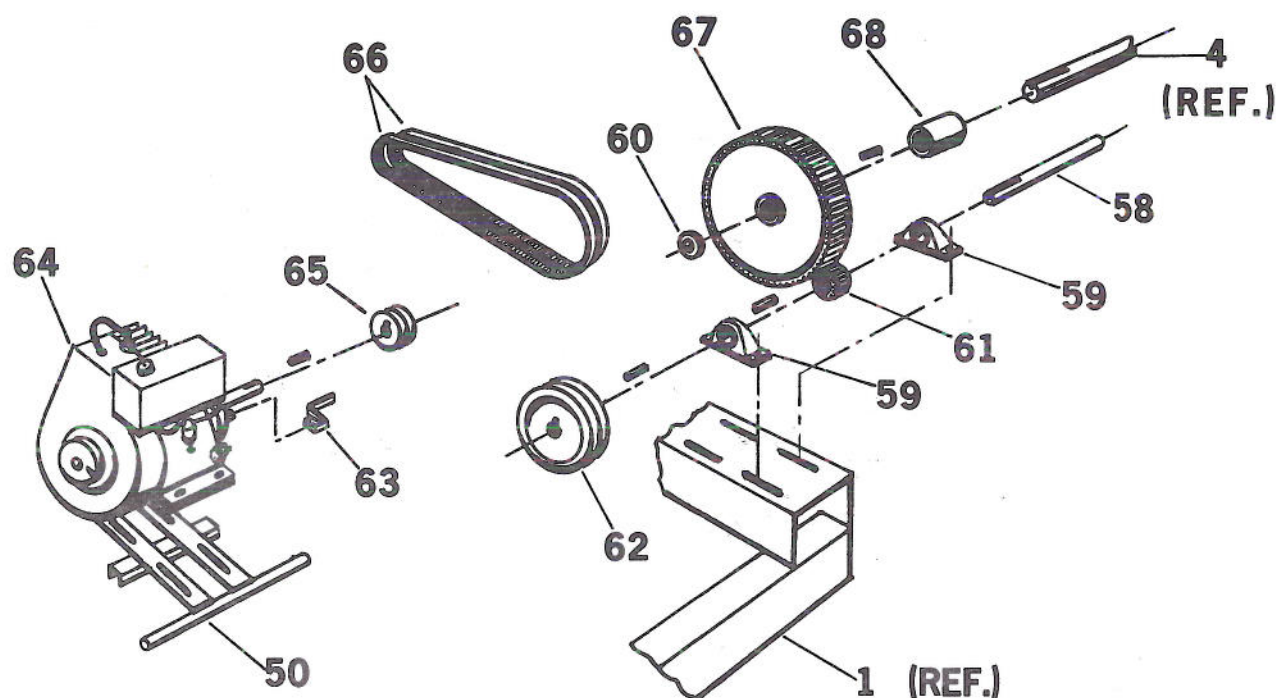
ITEM	DESCRIPTION	QTY	PART NO.
105	Tire & Rim (4.8 x 12)	2	34018
106	Bearing Cap	2	34573
107	Castellated Nut	2	-
108	Bearing	4	32051
109	Hub	2	34501
110	Wheel Seal	2	32052
111	Half Axle Assembly	2	26061 27543
112	Axle Support Assembly	1	27544
	Complete Assembly	1	21360

601,801 PM POWER TRAIN, ELECTRIC



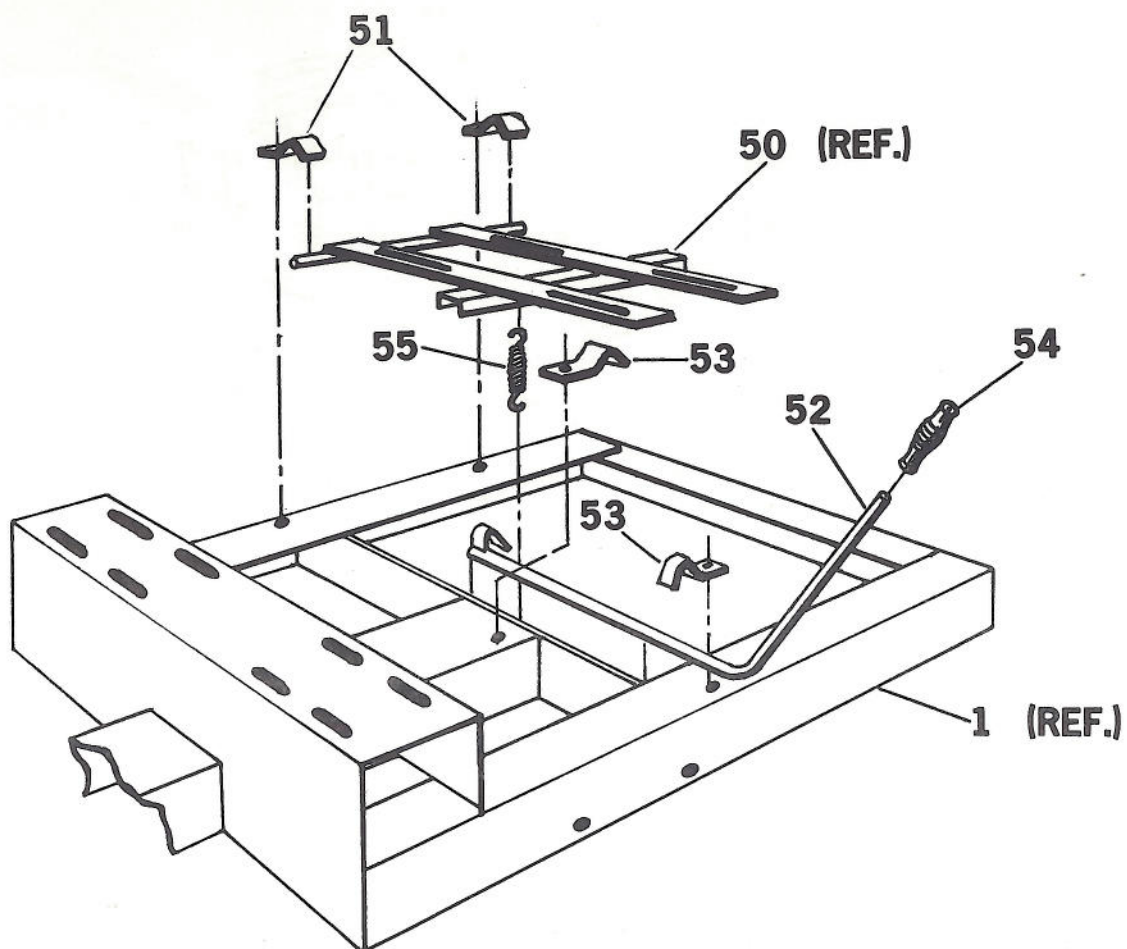
ITEM	DESCRIPTION	QTY	601PM	801PM
			1.5 hp.	2 hp.
50	Motor Base	1	27568	27568
70	Spacer	1	24048	24048
71	Countershaft	2	24036	24036
72	Pillow Block Brg	4	32097	32097
73	Sprocket (small)	1	34126	34126
74	Sheave (large)	1	34056	34056
75	Switch, dual voltage	1	36017	30136
76	Belt Guide	1	26199	26199
77	Electric Motor	1	30009	30053
78	Pigtail	1	48016	48016
79	Sheave (small)	1	34068	34068
80	Belt	2	34159	34159
81	Sprocket (large)	1	34127	34127
82	Chain, RC50	1	21184	21184
83	Pinion	1	26881	26881
84	Bull Gear	1	26933	26933
85	Shaft Washer	2	26326	26326

801,801 PM POWER TRAIN, GAS ENGINE



ITEM	DESCRIPTION	QTY	PART NO.				
			601PM	601PM & 801PM		801PM	
			5 hp.	8 hp.	7 hp.	7.5 hp.	7 hp.
			B & S	B & S	Kohler	Robin	Wisc.
50	Motor Base	1	27566	27563	27565	27567	27564
58	Countershaft	1	24036	24036	24036	24036	24036
59	Pillow Block Brg	2	32097	32097	32097	32097	32097
60	Shaft Washer	2	26326	26326	26326	26326	26326
61	Pinion	1	26881	26881	26881	26881	26881
62	Sheave (large)	1	34056	34056	34056	34056	34056
63	Belt Guide	1	26199	26199	26199	26199	26199
64	Engine	1	30025	30005	30085	30116	30028
65	Sheave (small)	1	34521	34051	34051	34051	34050
66	V-Belt	2	34812	34014	34014	34014	34052
67	Bull Gear	1	26933	26933	26933	26933	26933
68	Spacer	1	24048	24048	24048	24048	24048

601,801 PM CLUTCH & MOTOR BASE ASSEMBLY



ITEM	DESCRIPTION	QTY	PART NO.
50	Motor Base	1	
51	Motor Base Mtg. Bracket	2	27571
52	Hand Clutch Lever	1	27570 27786
53	Hand Clutch Lever Bracket	2	27559 27787
54	Hand Grip	1	34687
55	Extension Spring	1	34849

ECN 798