



# SERVICE/PARTS MANUAL

MODELS: CF30, CF36, CF46  
3 & 4 BLADES



## POWER TROWEL

A 100% employee-owned American manufacturer

# Exploded Diagrams & Parts List

---

Handle and Dyna-Clutch Assembly .....	34-37
Gearcase Assembly .....	38-39
Spider and Blade Assembly .....	40-43
Engine Assembly .....	44-47
Decal Identification .....	48-49



# Part Numbers

## Handle and Dyna-Clutch Assembly

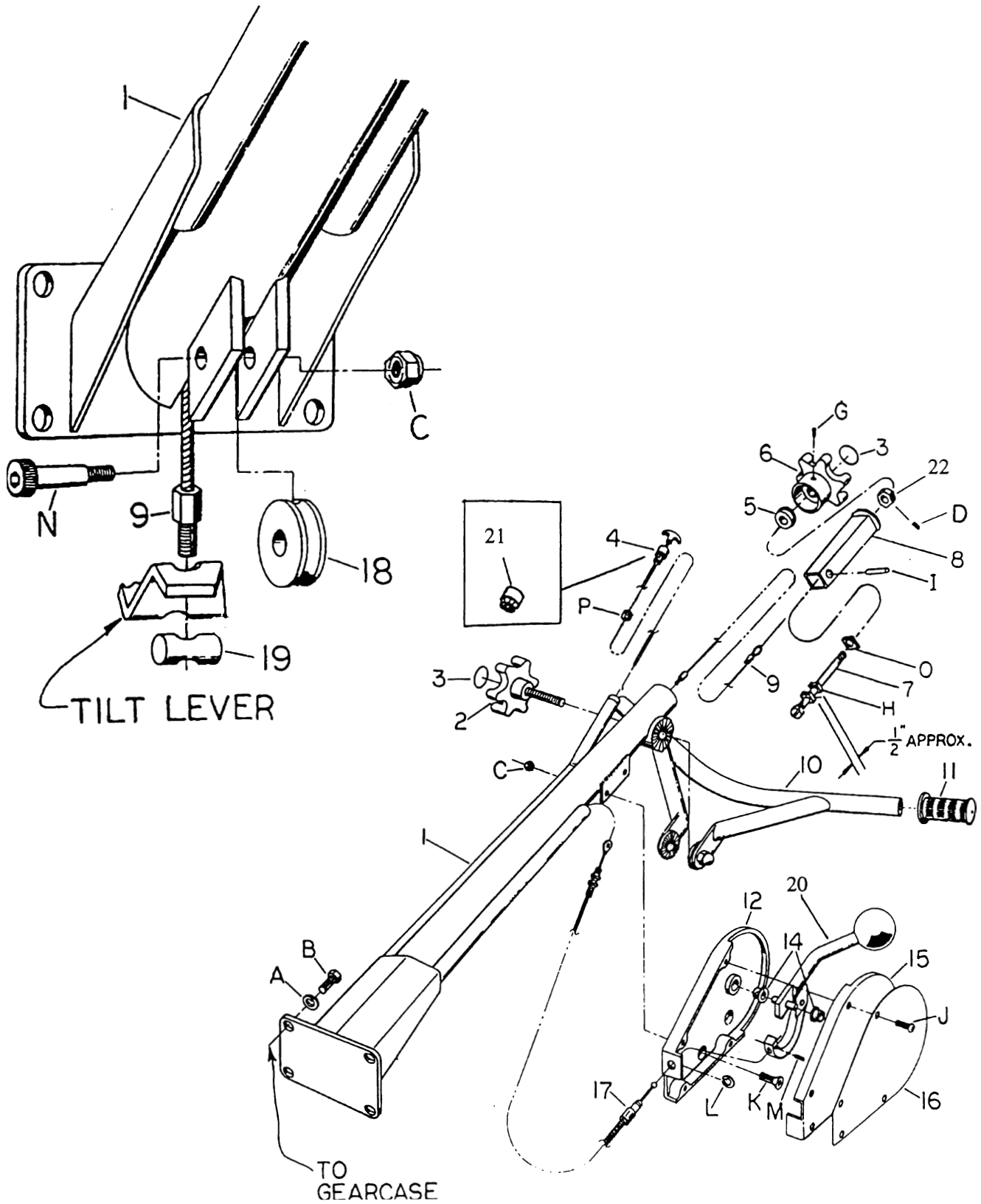
Item	Part No.	Description	Qty.
1	23095	Kit Handle Main	1
2#	21844	Assembly Adjustment Knob	1
3	55059	Decal Knob	2
4	35346	Throttle Assembly	1
5	32118	Bearing	1
6	27360	Tilt Knob	1
7	22239	Rod Tilt	1
8	22244-2	Tilt Block	1
9	34795	Tilt Cable	1
10	21843-2	Handle Adjustment	1
11	47125	Handle GRIP	2
12	27353-2	Dyna-Clutch Housing	1
14	32117	Bearing Nyliner	2
15	27355-2	Dyna-Clutch Cover	1
16	28396	Name Plate Dyna-Clutch	1
17	23365	Kit Cable Clutch	1
18	34785	Pivot Pulley	1
19	28022	Tilt Cable Pivot	1
20	21977	Dyna-Clutch Assembly	1
21	47190	Collet	1
22	42530	Tilt Lock Nut	1
*	22809	Kit Tilt Cable & Nut	1

**REMARK:**

\*Includes items 9, 22 and D.

# Part Numbers

# Handle and Dyna-Clutch Assembly



# Part Numbers

## Handle and Dyna-Clutch Assembly

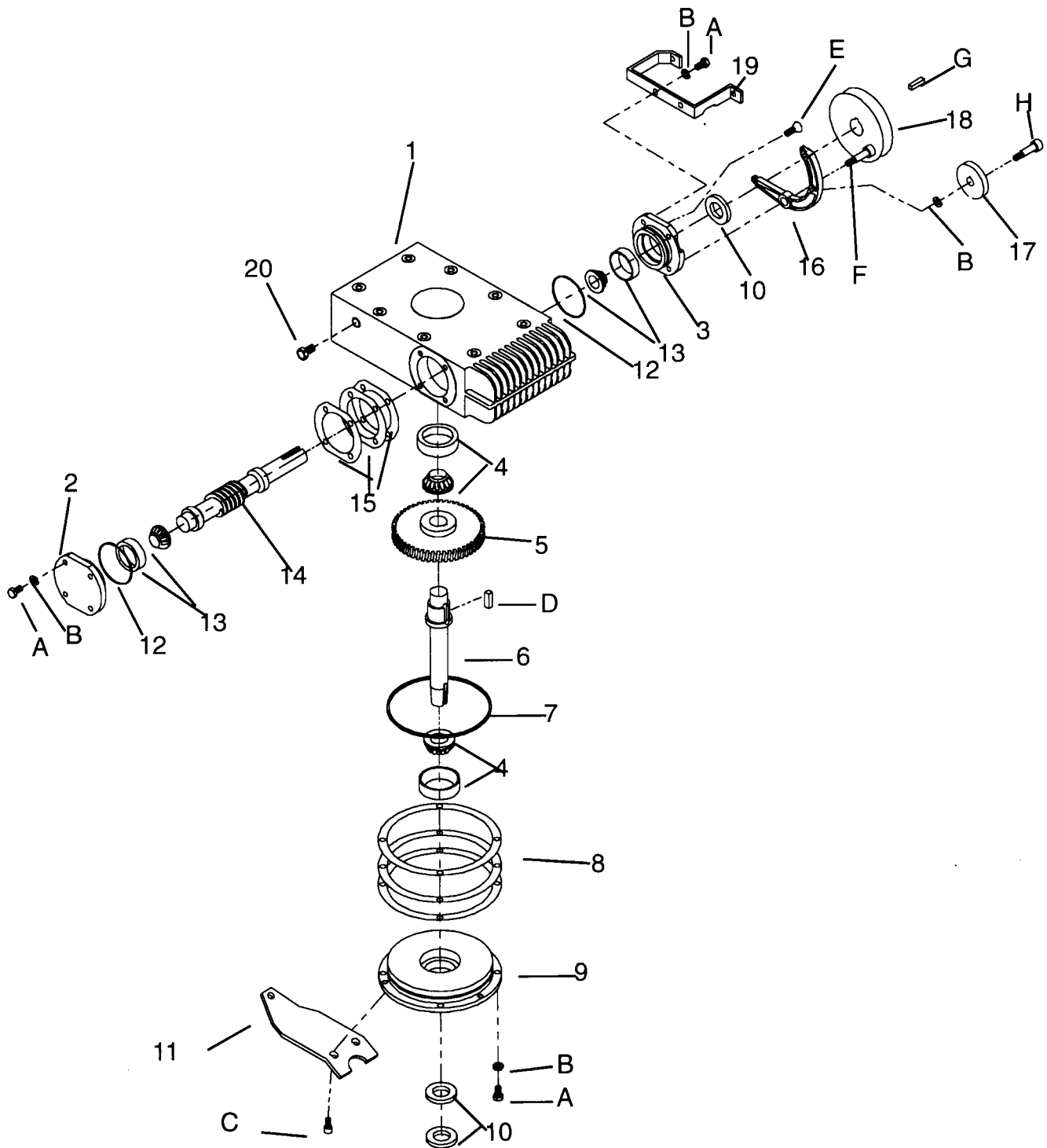
---

Item	Part No.	Description	Qty.
A	80058	WSHRL 3/8 MED SPLIT ZN	4
B	80102	HHCS 3/8 - 16 X 1 PLN	4
C	80236	NUTKP	3
D	80269	SHSS 10-32 X 5/16	1
G	80261	SHSS 3/8-16 X 3/4 CUP PT	1
H	80729	NUTSQ 1/2-13	2
I	80321	PINSP 3/8 X 1-1/4	1
J	800070	PPHMS 10-24 X 1	4
K	80272	FHSCS 1/4-20 X 5/8	2
L	80069	RING EXT 1/4	1
M	80305	PIN 1/8 X 5/16	1
N	80275	SHSHB 5/16-18 X 1	1
O	47185	WSHR URETH	1
P	35335	LKNUT	1

**REMARK:**

# Part Numbers

# Gearcase Assembly



# Part Numbers

## Gearcase Assembly

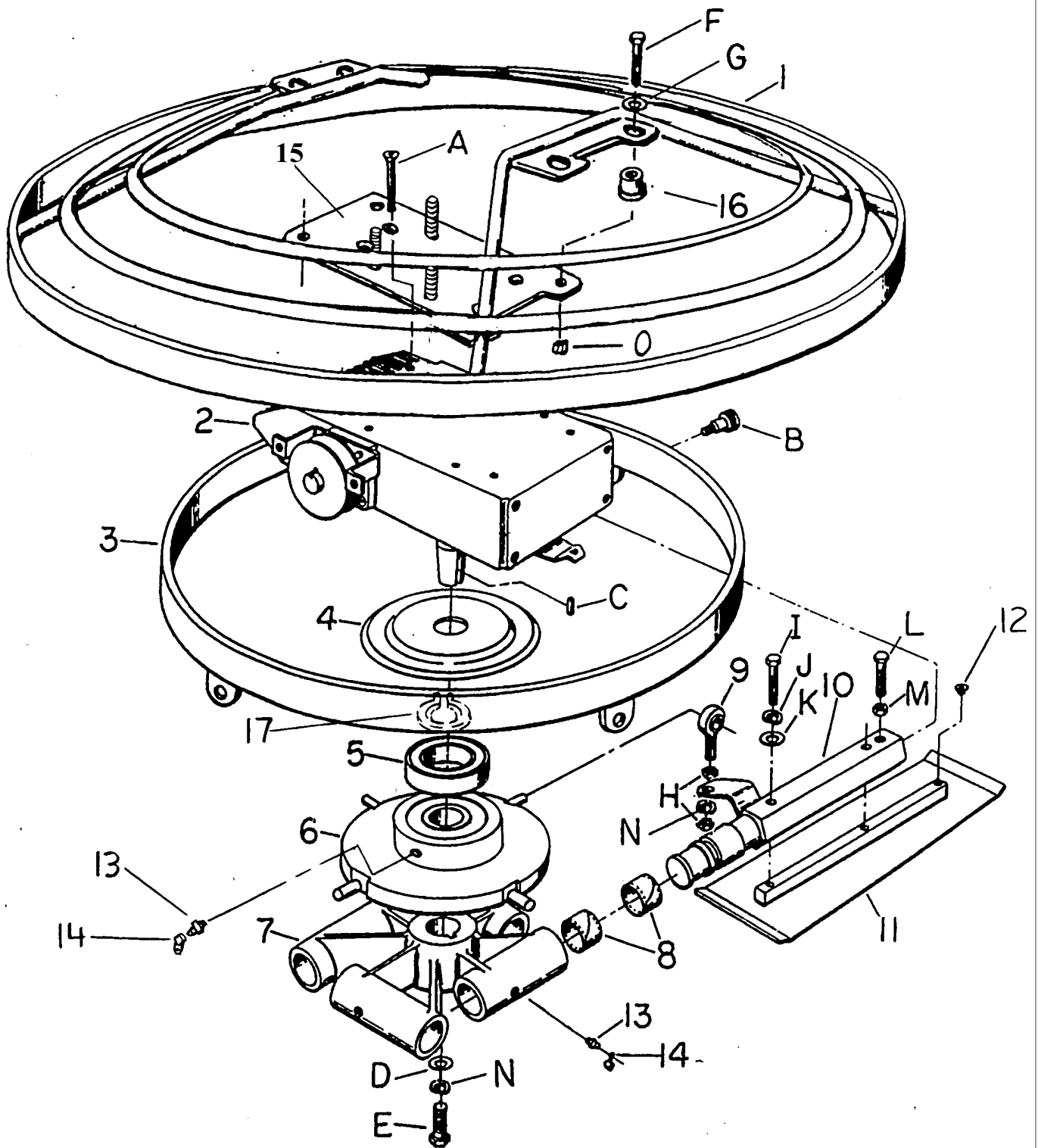
Item	Part No.	Description	Qty.
*	39562	Assembly Gearcase CF	1
1	39547	Gearcase Machined	1
2	42719	Side Cover	1
3	42718	Bearing Cover	1
4	32270	Bearing Output Shaft	2
5	39009	Worm Gear	1
6	42715	Output Shaft	1
7	32272	O'Ring #01-162	1
8	42799	Shim Set Large Bore	1
9	42720	Cap Bottom Bearing	1
10	39014	Shaft Seal	3
11	27368	Tilt Lever	1
12	32271	O'Ring #01-140	2
13	32233	Bearing	2
14	42712	Input Shaft	1
15	42800	Shim Set Small Bore	1
16	21667	Assembly Clutch Lever	1
17	35203	Vee Idler Pulley	1
18	34835	Sheave	1
19	42787-2	Belt Guard Mounting Bracket	1
20	34096	Oil Sight	1
A*	80161	HHCS 5/16 - 18 X 1 GR2 ZN #	10
B	80086	WSHRL 5/16 MED SPLIT ZN	11
C*	80285	SHSHB 3/8 X 1/2 BLK	2
D	80744	KEY HARD 5/16 SQ X 1	1
E*	80105	FHSCS 5/16 - 18 X 1 BLK #	1
F*	80093	SHSHB 3/8 X 3/4 BLK	1
G	80100	KEY HARD CLASS 1 1/4 SQ X 1	1
H	80124	SHSHB 3/8 X 1 BLK	1

**REMARK:** \*When reassembling Trowel, clean these bolts and their mating holes thoroughly, and apply (1) drop of Loc-tite #242 (or equivalent thread locking compound) to the threads.



# Part Numbers

# Spider and Blade Assembly



(Torque 40 ft.lbs)

# Part Numbers

## Spider and Blade Assembly

Item	Part No.	Description	Qty.
1	22898-2	Guard Sty ISO CF30 4 Blade	1
	22899-2	Guard Sty ISO CF36 3/4 Blade	1
	22900-2	Guard Sty ISO CF46 3/4 Blade	1
2^	39562	Gearcase Assy	1
3	22170-2	Ring Retaining CF30 4 Blade	1
	22173-2	Ring Retaining CF36 3 Blade	1
	22171-2	Ring Retaining CF36 4 Blade	1
	22174-2	Ring Retaining CF46 3 Blade	1
	22172-2	Ring Retaining CF46 4 Blade	1
4	39545-2	Cover Thrust Plate	1
5	39558	Bearing Thrust	1
6	39543-2	Plate Tilt Assy 3 Blade	1
	39542-2	Plate Tilt Assy 4 Blade	1
7	28282-2	Spider 3-Arm 3 Blade	1
	28283-2	Spider 4-Arm 4 Blade	1
8	32180	Bearing Arm Nyliner 3 Blade	6
	32180	Bearing Arm Nyliner 4 Blade	8
9	32124	Rod Ends Superior 3 Blade	3
	32124	Rod Ends Superior 4 Blade	4
10	22182-2	Arm Weld CF30 4 Blade	4
	22183-2	Arm Weld CF36 3 Blade	3
	22183-2	Arm Weld CF36 4 Blade	4
	22184-2	Arm Weld CF46 3 Blade	3
	22184-2	Arm Weld CF46 4 Blade	4
11	34576	Blade Set 4 Finished CF30	1
	34577	Blade Set 3 Finished CF36	1
	34578	Blade Set 4 Finished CF36	1
	34879	Blade Set 3 Finished CF46	1
	34580	Blade Set 4 Finished CF46	1
	34581	Blade Set 4 Combination CF30	1
	34582	Blade Set3 Combination CF36	1
	34583	Blade Set 4 Combination CF36	1
	34584	Blade Set3 Combination CF46	1
	34585	Blade Set 4 Combination CF46	1
12	47183	Cap Plug W-1-Red 3 Blade	3
	47183	Cap Plug W-1-Red 4 Blade	4

**REMARK:**

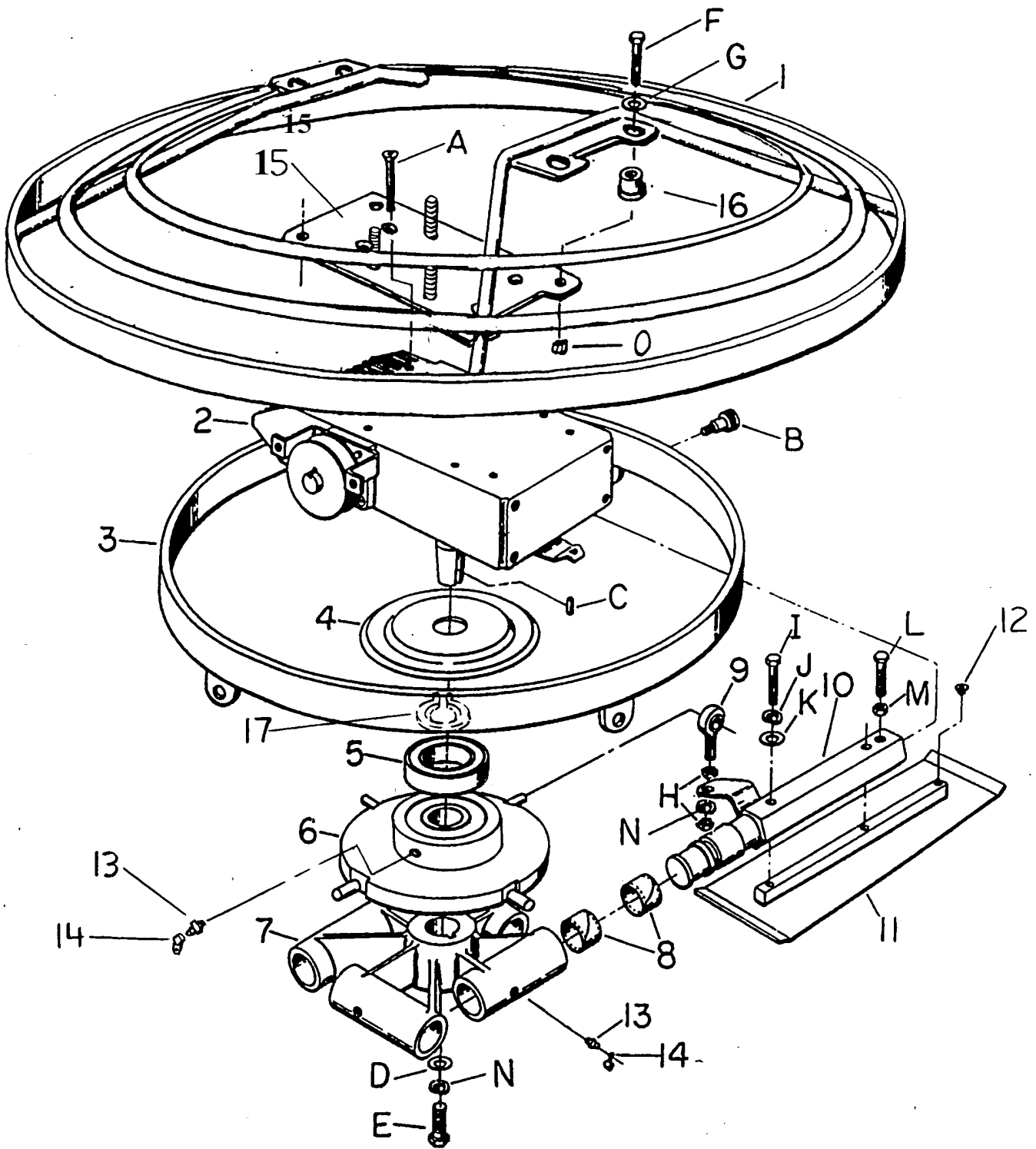
# Not Shown

\* Includes items 4,5,6,17

^ See Gearcase Assembly section

# Part Numbers

# Spider and Blade Assembly



(Torque 40 ft.lbs)

# Part Numbers

## Spider and Blade Assembly

Item	Part No.	Description	Qty.
13	46042	Fitting Grease 3 Blade	4
	46042	Fitting Grease 4 Blade	5
14	47001	Cap Plug GC-5 Blue 3 Blade	3
	47001	Cap Plug GC-5 Blue 4 Blade	4
15	39553-2	Base Engine Assy 3,5 B&S/5.5 Honda/4.6 Robin/5 B&S I/P	1
	39555-2	Base Engine Assy 8 B&S/8 Honda	1
	39554-2	Base Engine Assy 7.5 Robin	1
16	47355	Mount Shock	4
17	39559	Ring Extension	1
18#*	23194	Kit Tilt Plate 4 Blade	1
19#*	23195	Kit Tilt Plate 3 Blade	1
A^	80068	FHSCS 3/8 - 16 X 1 BLK	8
B*	80066	SHSHB 1/2 X 1/2 BLK 3 Blade	3
	80066	SHSHB 1/2 X 1/2 BLK 4 Blade	4
C	80394	KEY SQUARE 1/4 X 1-1/4	1
D	28435	WSHR	1
E	80174	HHCS 3/8 - 16 X 1 GR8 ZN	1
F	80176	HHCS 3/8 - 16 X 1-1/2 GR2 ZN	4
G	80043	WSHR 3/8 WROT ZN	4
H	80243	NTFXJ 3/8 - 24 ZN 3 Blade	6
	80243	NTFXJ 3/8 - 24 ZN 4 Blade	8
I	80167	HHCS 5/16 - 18 X 1-3/4 GR2 ZN 3 Blade	6
	80167	HHCS 5/16 - 18 X 1-3/4 GR2 ZN 4 Blade	8
J	80086	WSHRL 5/16 MED SPLIT ZN 3 Blade	6
	80086	WSHRL 5/16 MED SPLIT ZN4 Blade	8
K	80348	WSHR 5/16 WROT ZN 3 Blade	6
	80348	WSHR 5/16 WROT ZN 4 Blade	8
L	80166	HHTB 5/16 - 18 X 1-3/4 CR2 ZN 3 Blade	3
	80166	HHTB 5/16 - 18 X 1-3/4 CR2 ZN 4 Blade	4
M	80245	NUTFX 5/16 - 18 ZN 3 Blade	3
	80245	NUTFX 5/16 - 18 ZN 4 Blade	4
N	80058	WSHRL 3/8 MED SPLIT ZN	2
O	80056	NUTNY 3/8 - 16 ZN	4

**REMARK:**

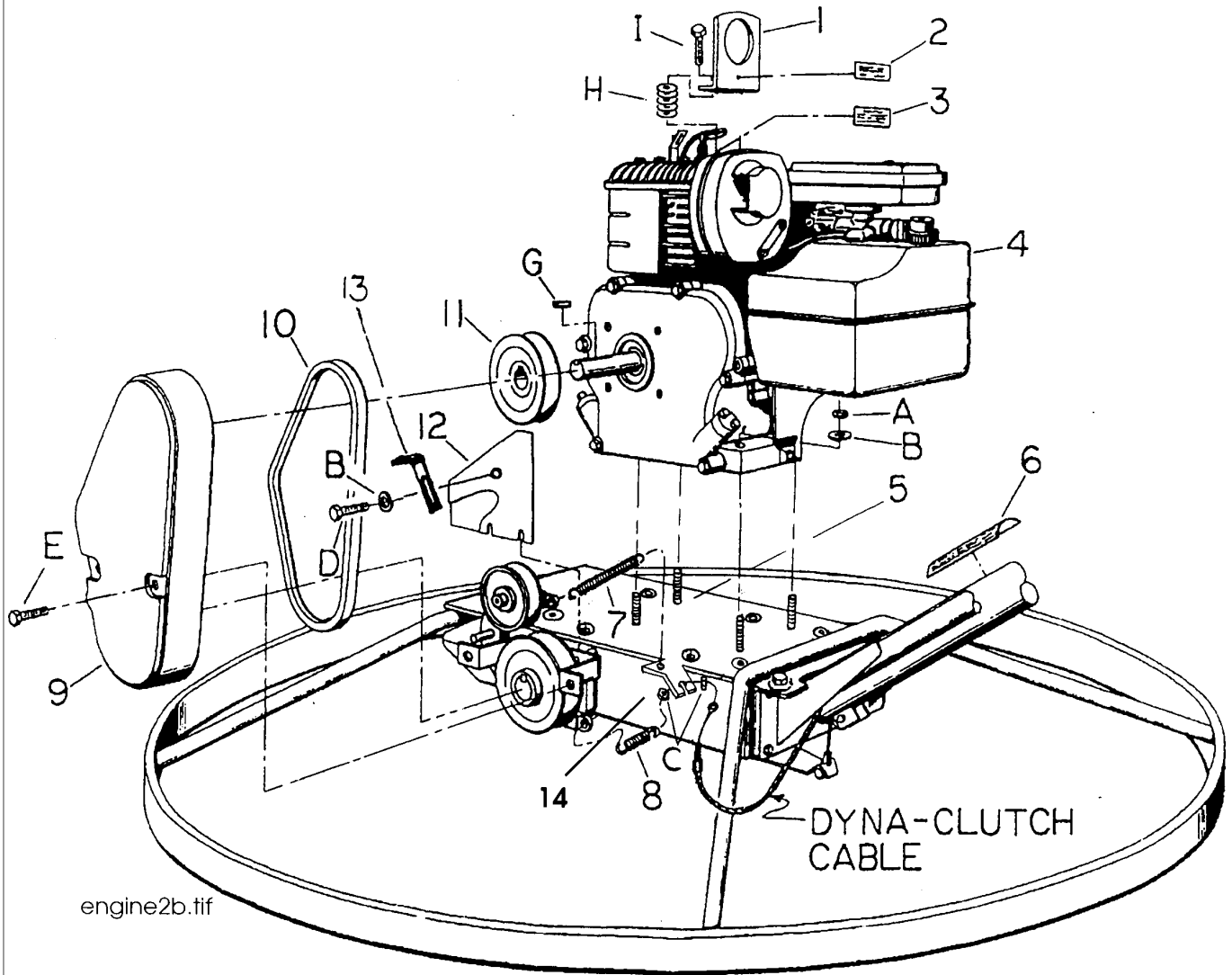
# Not Shown

\* Includes items 4,5,6,17

^ When reassembling, clean bolts and holes, apply one drop loctite #242 or #262 (or equivalent thread locking compound to threads)

# Part Numbers

# Engine Assembly



engine2b.tif

# Part Numbers

## Engine Assembly

Item	Part No.	Description	Qty.
1	24543-2	Lifeye 3,5,8 B&S,5 B&S I/P	1
	42451-2	Lifeye 4.6 Robin	1
	28318-2	Lifeye 5.5 Honda	1
	28683-2	Lifeye 8 Honda	1
	27533-2	Lifeye 7.5 Robin	1
2	55021	Decal Caution	1
3	55043	Decal Idle Engine	1
4	30071	Engine 3 B&S	1
	30072	Engine 5 B&S	1
	30318	Engine 5 B&S I/P	1
	30320	Engine 8 B&S I/P	1
	30159	Engine 5.5 Honda	1
	30160	Engine 8 Honda	1
	30265	Engine 4.6 Robin	1
	30248	Engine 7.5 Robin	1
5^	39553-2	Base Engine Assy 3,5 B&S/5.5 Honda/4.6 Robin/5B&S I/P	1
	39555-2	Base Engine Assy 8 B&S/8 Honda	1
	39554-2	Base Engine Assy 7.5 Robin	1
6	55049	Decal Oper & Safety	1
7	34797	Idler Return Spring	1
8	34796	Clutch Spring	1
9	47229-2	Guard Belt	1
10	35331	Belt L427	1
	35333	Belt L429	1
11	34833	Sheave AK34x3/4 3,5 B&S/5.5 Honda/4.6 Robin/5B&S I/P	1
	34834	Sheave AK34x1 7.5 Robin/8 Honda	1
12	28301-2	Belt Guard Rear	1
13	28431-2	Belt Guide Bracket	1
14#	39562	Gearcase CF Assembly	1

\*For best trowel performance and longest belt life, use only raw-edged Kevlar belts.

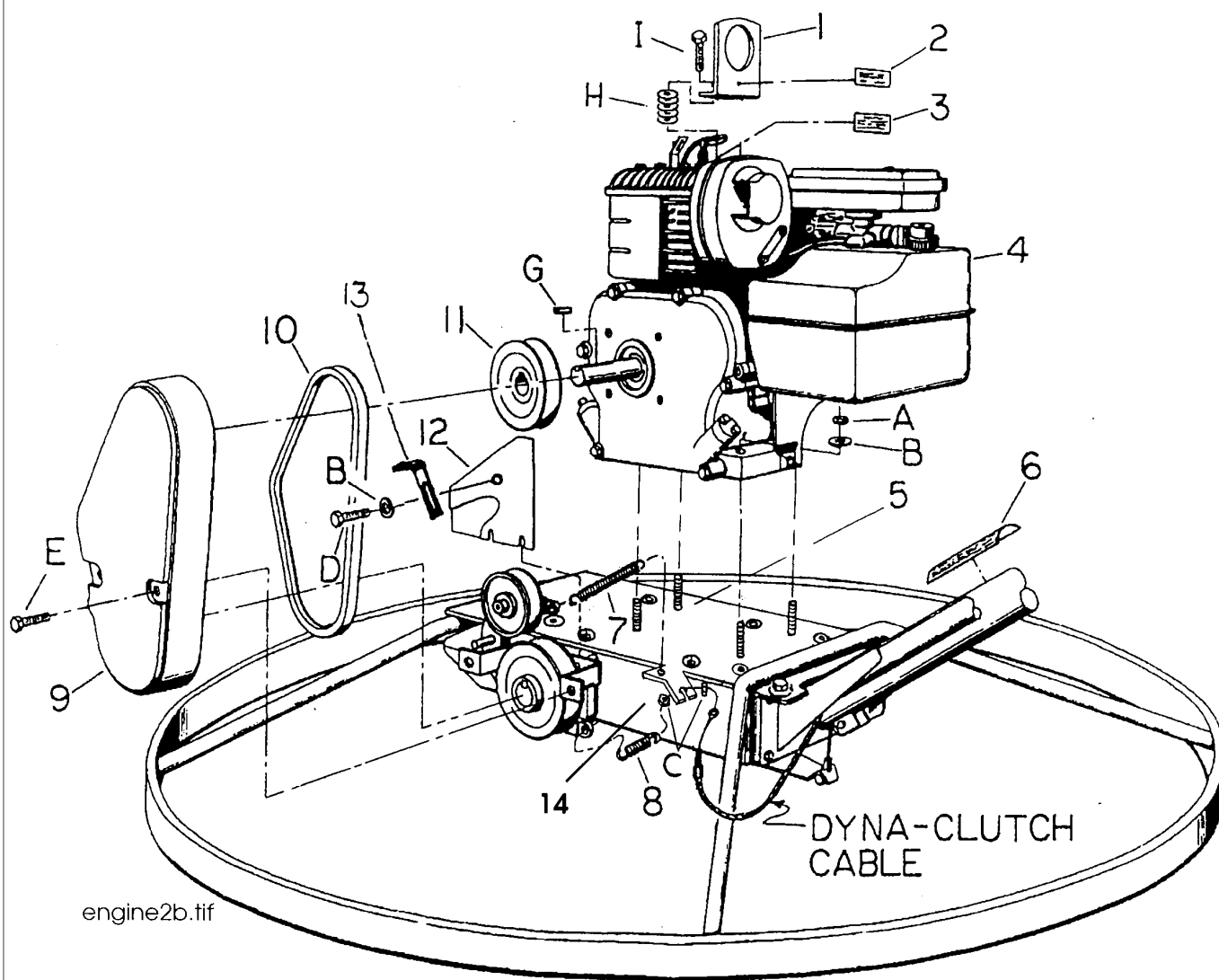
**REMARK:** \*\*Inside belt guard mounts under belt guard bracket. To install inside guard, loosen (2) 5/16 bolts securing belt guard bracket to the gear case. Slide inside guard behind the bracket and retighten the (2) 5/16 bolts.

# See Gearcase Assembly section

^ See Spider Blade Assembly

# Part Numbers

## Engine Assembly



engine2b.tif

# Part Numbers

## Engine Assembly

Item	Part No.	Description	Qty.
A	80114	NUTNY 5/16 - 18	4
B	80086	WSHR 5/16 MED SPLIT	5
C	80096	NUTNY 5/16 - 24	2
D	80158	HHCS 5/16 - 18 X 1/2	3
E	80348	WSHR 5/16 X 1 WROT	2
	80586	WHB 5/16-18-1/2	2
F#	80068	FHSCS 3/8 - 16 X 1	8
G*	80060	KEY SQUARE 3/16 X 1	1
**	80100	KEY SQUARE 1/4 X 1 CLS 1	2
H	80348	WSHR 5/16 WROT ZN	5
I	80579	HHCS 5/16 - 18 X 2-1/4 ZN	1
J <sup>^1</sup>	80171	FHSCS 5/16-24x3/4	1

**REMARK:** <sup>^1</sup> Not Shown. Lifeye Mounting Hardware Required.

\*3/16 X 1 square keys are used on the following engines: 3 B&S, 5 B&S, 5 B&S I/P, 4.6 Robin and 5.5 Honda.

\*\*1/4 X 1 hard square keys are used in the following engines: 8 Honda, 8 B&S, 7.5 Robin.



# Part Numbers

# Decal Identification

### NOTICE

CONTACT THE MANUFACTURER IMMEDIATELY AT 1-800-888-9926 IF SAFETY OR HAZARD DECALS OR OWNER'S MANUAL ARE MISSING FROM THIS EQUIPMENT. 55156

## CAUTION

- READ OWNER'S SERVICE MANUAL BEFORE OPERATING OR SERVICING THIS MACHINE.
- ALWAYS KEEP UNAUTHORIZED, INEXPERIENCED, UNTRAINED PEOPLE AWAY FROM THIS MACHINE.
- ROTATING AND MOVING PARTS WILL CAUSE INJURY IF CONTACTED. MAKE SURE GUARDS AND SAFETY DEVICES ARE IN PLACE BEFORE THIS MACHINE IS OPERATED. MAKE SURE ENGINE IS SHUT DOWN AND SPARK PLUG WIRE DISCONNECTED BEFORE SERVICING THE MACHINE OR APPROACHING THE MOVING PARTS.
- WHEN STARTING, MAKE SURE CLUTCH LEVER IS IN "STOP"(DOWN) POSITION.
- NEVER LEAVE MACHINE UNATTENDED. ALWAYS STOP ENGINE BEFORE ADDING FUEL OR OIL. ALWAYS KEEP GEARBOX FILLED WITH MOBIL1 OIL TO OIL LEVEL.

If owner's manual has been lost, call: Stone Construction Equipment, Inc., Honeoye, NY (716-229-5141)

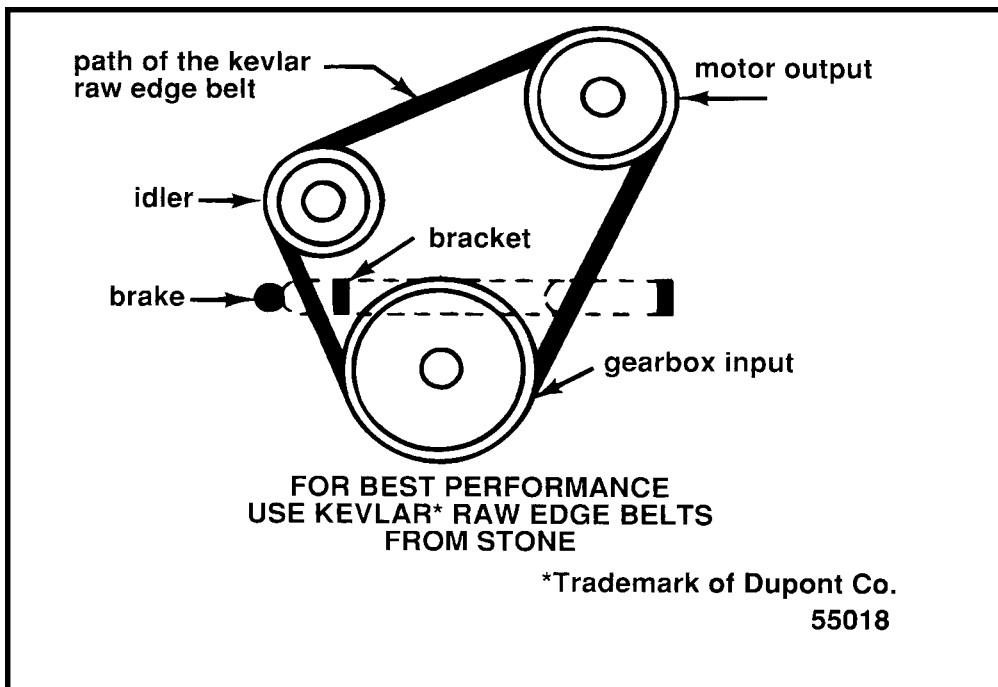
55049

**CAUTION**  
USE SAFETY STRAPS  
TO BASE WHEN LIFTING  
MORE THAN TWO FEET  
HIGH

55021

IDLE ENGINE 5 MINUTES  
BEFORE STOPPING  
TO IMPROVE SERVICE LIFE

55417



# Part Numbers

## Decal Identification

---

Item	Part No.	Description	Qty.
#	23263	Kit Decal Warnings	1
1	55018	Decal, Kevlar Belts	1
2	55021	Decal, Caution Safety Straps	1
3	55417	Decal, Idle	1
4	55049	Decal, Caution--Warnings	1
5	55156	Decal, Missing	1

**REMARK:** # Not Shown--Kit includes items 1-5