



OWNER'S MANUAL

MODELS: HDP 484



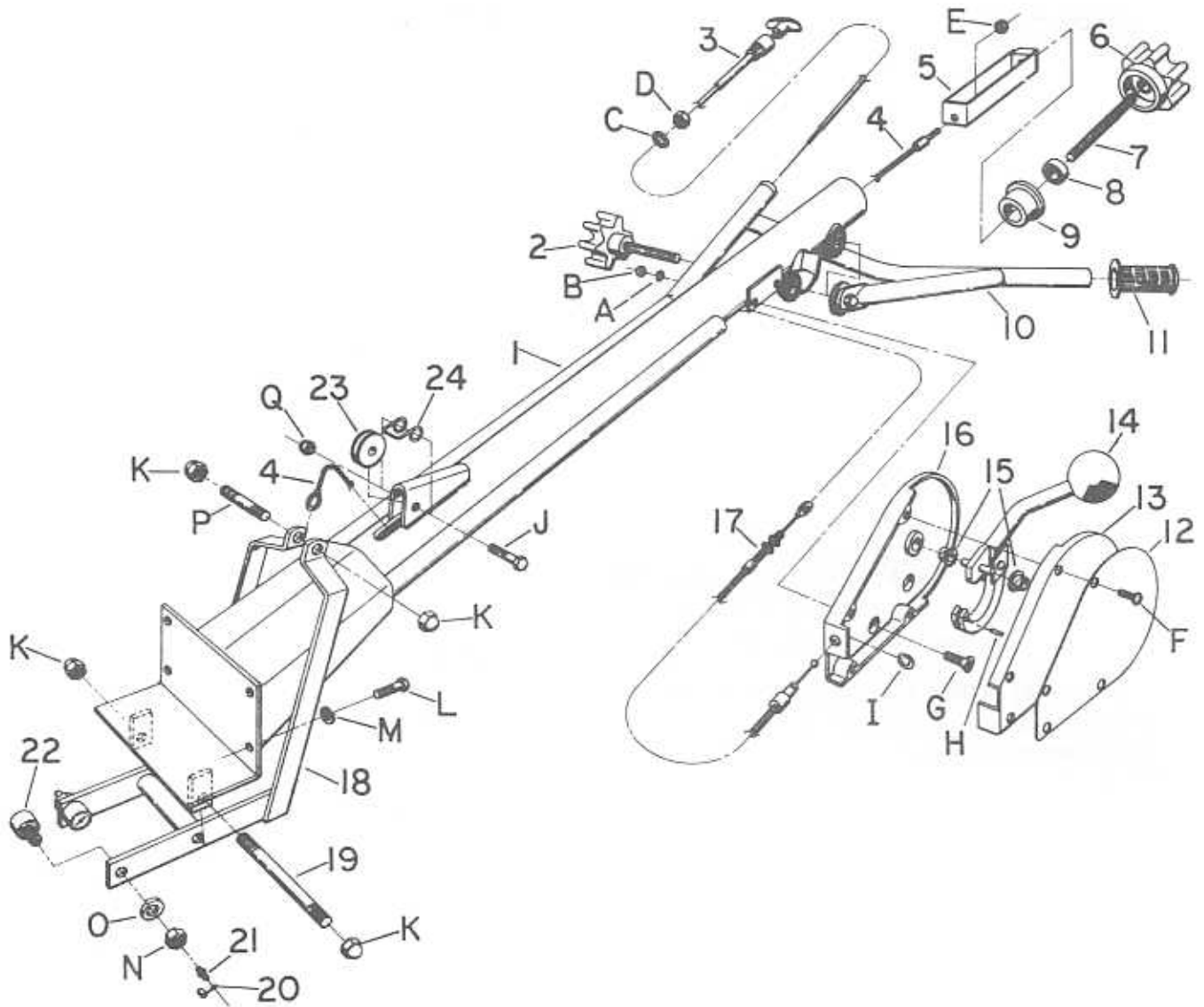
POWER TROWEL

Stone Construction Equipment, Inc.
P.O. Box 150, Honeoye, New York 14471
Phone: (800) 888-9926
Fax Numbers:
Honeoye, NY 716-229-2363
Pleasant Grove, UT 801-785-0249
Brunswick, GA 912-264-5758

A 100% employee-owned American manufacturer

© 1991 Stone Construction Equipment, Inc.

HANDLE AND DYNA-CLUTCH ASSEMBLY



ITEM	PART NO.	DESCRIPTION	QTY
1	22210	Handle, Main	1
2	21844	Knob, Handle Adjustment	1
3	35338	Cable Assembly, Throttle	1
4	34795	Cable, Tilt	1
5	22224	Block, Titl*	1
6	28347	Knob, Titl	1
7	28326	Rod, Acme Threaded*	1
8	32118	Bearing, Tilt	1
9	28338	Retainer, Tilt Bearing	1

ITEM	PART NO.	DESCRIPTION	QTY
10	22213	Handle, Adjustable	1
11	47125	Grip, Handle	2
12	28396	Plate, Dyna-Clutch Inst.	1
13	27355	Cover, Dyna-Clutch Housing	1
14	21977	Lever Assembly, Dyna-Clutch	1
15	32117	Bearing, Nyliner	2
16	27353	Housing, Dyna-Clutch	1
17	35337	Cable Assembly, Dyna-Clutch	1
18	22211	Lever, Tilt	1
19	28354	Rod, Pivot	1
20	47001	Cap, Grease Fitting	2
21	46114	Fitting, grease	2
22	32197	CAM Follower	2
23	28342	Pulley, Pivot	1
24	28391	Guide, Tilt Cable	1

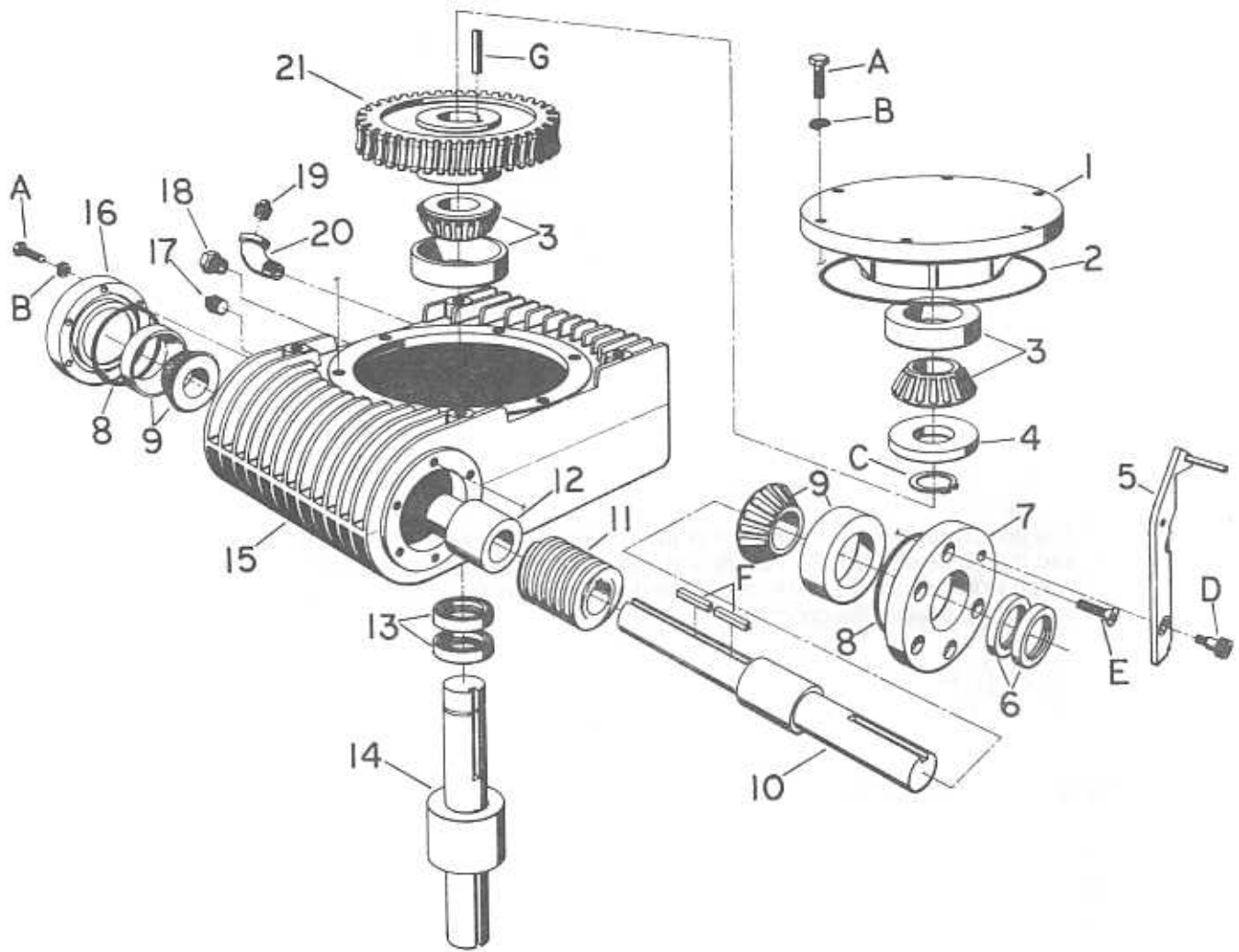
* The last (2)-(3) threads on the end of the Threaded Rod (item 7), must be peened over after assembly into the Tilt Block (item 5). Failure to do so could result in the separation of these (2) parts during use, which would cause the tilt block to slide down inside of the Main Handle (item 1), and the trowel blades to drop flat against the concrete.

HARDWARE

ITEM	PART NO. or SIZE	DESCRIPTION	QTY
A	1/4	Washer, Ext. Tooth Star	2
B	1/4-20	Nut, Plain Hex	2
C	9/16	Washer, Int. Tooth Star*	1
D	9/16-18	Nut, Hex Jam*	1
E	1/2-28	Nut, Nylock	1
F	10-24 x 7/8	Screw, Philips Head Machine	4
G	1/4-20 x 5/8	Bolt, Flat Head	2
H	1/8 x 5/16	Pin, Spirol	1
I	80069	E-Ring	1
J	5/16-18 x 1-1/2	Bolt, Hex Head	1
K	1/2-13	Nut, Half Acorn	4
L	3/8-16 x 1-1/4	Bolt, Hex Head	4
M	3/8	Washer, Split Lock	4
N	80132	Nut, Plain Hex, 5/8-18	2
O	5/8	Washer, Split Lock	2
P	80130	Stud, Tilt Bracket	1
Q	5/16-18	Nut, Nylock	1

* These parts are not available separately. They are included with the Throttle Cable Assembly Only.

GEARCASE



ITEM	PART NO.	DESCRIPTION	QTY
*	22203	Gearcase Assembly	1
1	28321	Cover, Case	1
2	32119	O-Ring	1
3	32192	Bearing, Tapered Roller	2
4	28357	Spacer, Output Shaft	1
5	22208	Arm Assembly, Dyna-Clutch	1
6	32194	Seal, Oil	2
7	28325	Cap, Bearing - Seal End	1
8	32198	O-Ring	2
9	32193	Bearing, Tapered Roller	2
10	28330	Shaft, Input	1

ITEM	PART NO.	DESCRIPTION	QTY
11	28328	Worm	1
12	28331	Spacer, Input Shaft	1
13	32195	Seal, Oil	2
14	28329	Shaft, Output	1
15	28319	Gearcase	1
16	28323	Cap, Bearing - Blind End	1
17	46113	Plug, Drain	1
18	34096	Plug, Oil Sight	1
19	46107	Plug, Filler	1
20	46112	Elbow, Filler	1
21	28327	Gear, Worm	1

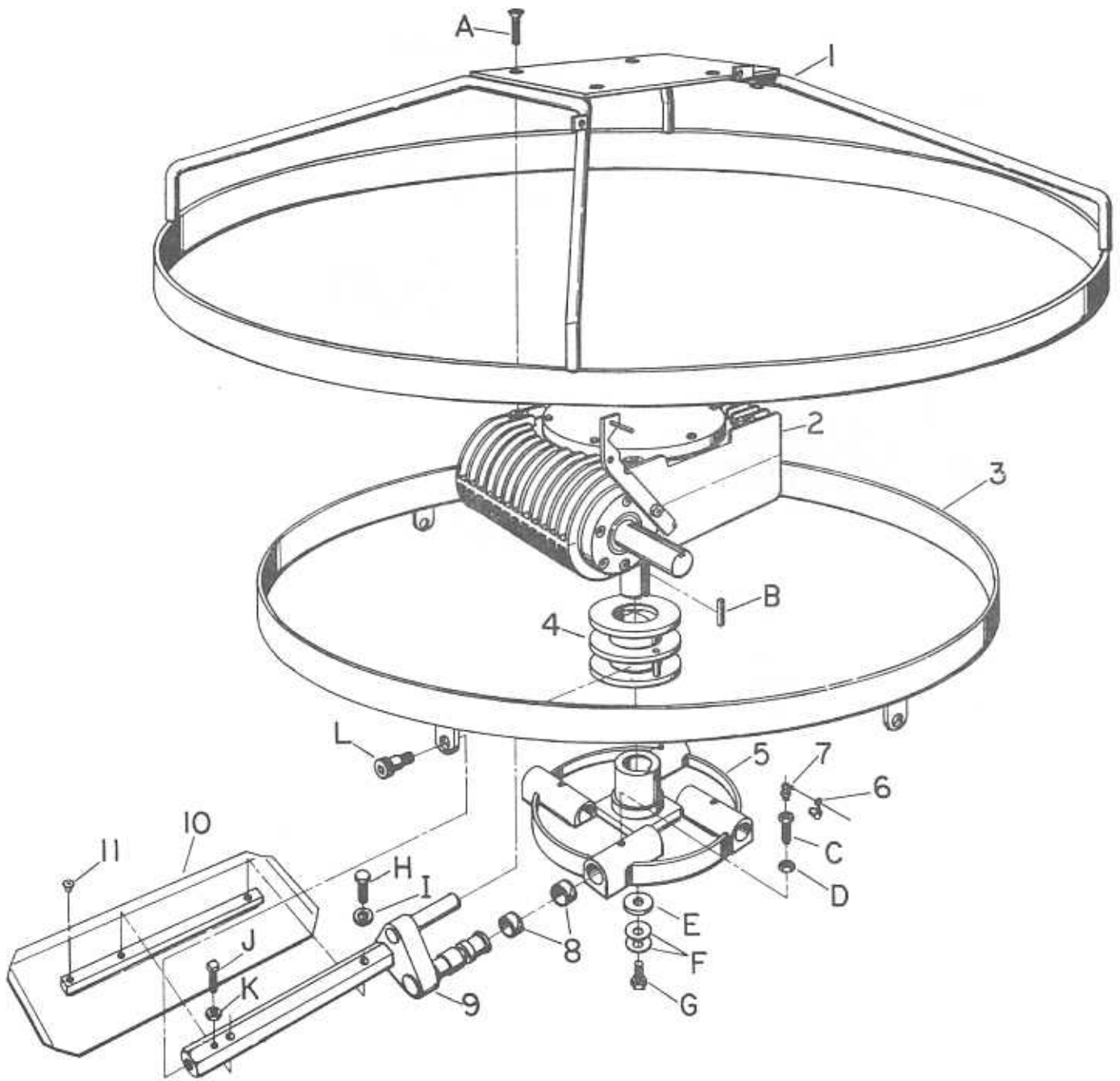
* Gearcase Assembly includes all parts and hardware items listed on this page except for the Dyna-Clutch Arm Assembly (item 5) and Scket Head Shoulder Bolt (item D).

HARDWARE

ITEM	PART NO.	DESCRIPTION	QTY
A	5/16-18 x 1	Bolt, Hex Head	12
B	5/16	Washer Split Lock	12
C	35339	Ring, Retainer	1
D*	3/8 x 3/4	Bolt, Socket Head Shoulder	1
E	5/16-18 x 1	Bolt, Flat Head	5
F	3/16 x 1	Key, Square	2
G	1/4 x 1-1/2	Key, Square	1

* When reassembling trowel, clean these bolts and their mating holes thoroughly, and apply (1) drop of any good quality medium strength thread locking compound to the threads.

SPIDER AND BLADE ASSEMBLY



ITEM	PART NO.	DESCRIPTION	QTY
1	22207	Guard, Stationary	1
2	*	Gearcase Assembly	1
3	22206	Ring, Rotating	1
4	22212	Spool Assembly	1
5	28332	Spider	1
6	47001	Cap, Grease Fitting	4
7	46070	Fitting, Grease	4
8	32196	Bearing, Nyloner	8
9	22205	Arm	4
10	34585	Blade Set, Combination	1
11	47183	Caplug	4

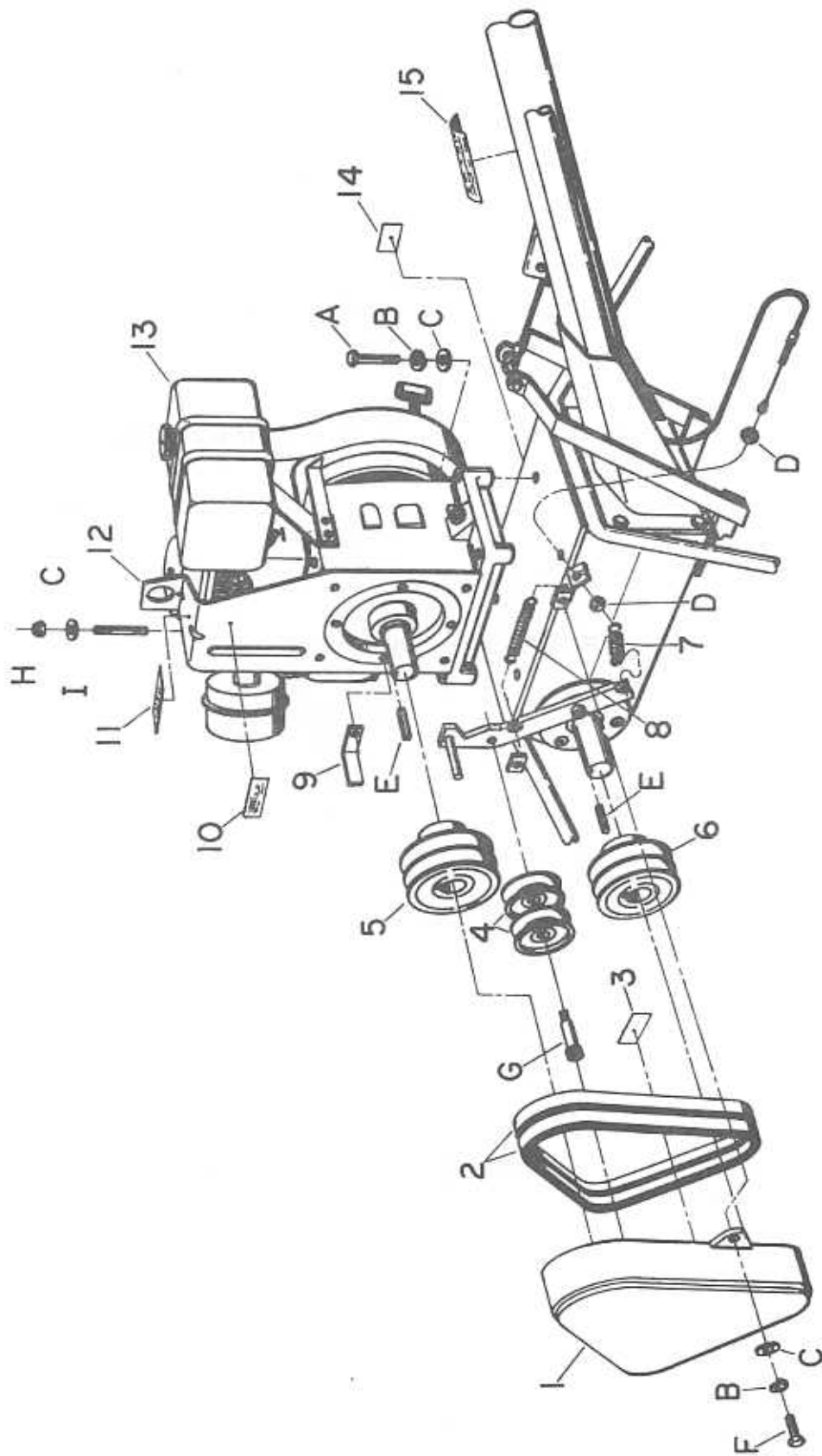
*See GEARCASE ASSEMBLY exploded view for part number and details.

HARDWARE

ITEM	PART NO.	DESCRIPTION	QTY
A	3/8-16 x 1	Bolt, Flat Head	4
B	1/4 x 1-1/2	Key, Square	1
C	26760	Bolt, Arm Retaining	4
D	3/8-16	Nut, Plain Hex	4
E	26326	Washer, Heavy Flat	4
F	80123	Washer, Bellville	2
G*	3/8-16 x 1-1/4	Bolt, Hex Head, Grade 8	1
H	5/16-18 x 1-3/4	Bolt, Hex Head	8
I	5/16	Washer, Split Lock	8
J	5/16-18 x 2	Bolt, Square Head	4
K	5/16-18	Nut, Plain Hex	4
L*	1/2 x 1/2	Bolt, Socket Head shoulder	4

* When reassembling trowel, clean these bolts and their mating holes thoroughly, and apply (1) drop of any good quality medium strength thread locking compound to the threads.

ENGINE ASSEMBLY



ITEM	DESCRIPTION	QTY	7.5 Robin	9.2 Wisc.	10 Honda	11 Robin
6	Sheave, 2AK32-1.12 Ext.	1	-	28383	-	-
	Sheave, 2AK32-1.12	1	-	-	-	35340
7	Sheave, 2AK41-1	1	35341	35341	35341	35341
8	Spring, Clutch Csble	1	34796	34796	34796	34796
9	Spring, Clutch Lever	1	34797	34797	34797	34797
10	Bracket, Belt Stop	1	28378	28378	28378	28378
11	Decal, Engine Idle	1	SN-61	SN-61	SN-61	SN-61
12	Decal, Lift Eye	1	SN-50A	SN-50A	SN-50A	SN-50A
13	Lifeye	1	27533	27533	27533	27533
14	Engine	1	30119	30086	30161	30162
15	Decal, Oil Level	1	SN-99	SN-99	SN-99	SN-99
**	Decal, Operation & Safety	1	SN-77	SN-77	SN-77	SN-77
**	Spacer, Engine	4	28380	-	-	-
**	Bracket, Throttle Cable	1	-	28388	-	-
**	Bracket, Muffler Support	1	-	-	28379	-
**	Muffler	1	-	-	22227	-

* For best trowel performance and longest belt life, use only Kevlar belts. (Kevlar is a trademark of the DuPont Co.)
 ** These parts not shown.

HARDWARE

ITEM	DESCRIPTION	PART NO. OR SIZE	7.5 Robin	9.2 Wisc.	10 Honda	11 Robin
A	Bolt, Hex Head	5/16-18 X 1-1/2	-	-	4	4
	Bolt, Hex Head	5/16-18 X 2	4	-	-	-
	Bolt, Hex Head	5/16-18 x 2-1/2	-	3	-	-
B	Washer, Split Lock	5/16	6	5	6	6
C	Washer, Flat	5/16	6	6	6	6
D	Nut, Hex Jam	5/16 -24	2	2	2	2
E	Key, square	1/4 x 1-1/2	2	2	2	2
F*	Bolt, Hex Head	5/16-18 x 3/4	2	2	2	2
G	Bolt, Hex Head Cap Screw	3/8 x 2	1	1	1	1
H	Nut, Nylock	5/16-18	-	1	-	-
I	Stud, Engine Mount	80129	-	1	-	-
J	Washer, Lock	3/8	1	1	1	1

* When reassembling trowel, clean this bolt and its mating hole thoroughly, and apply (1) drop of any good quality medium strength thread locking compound to the threads.