

OPERATOR/PARTS MANUAL

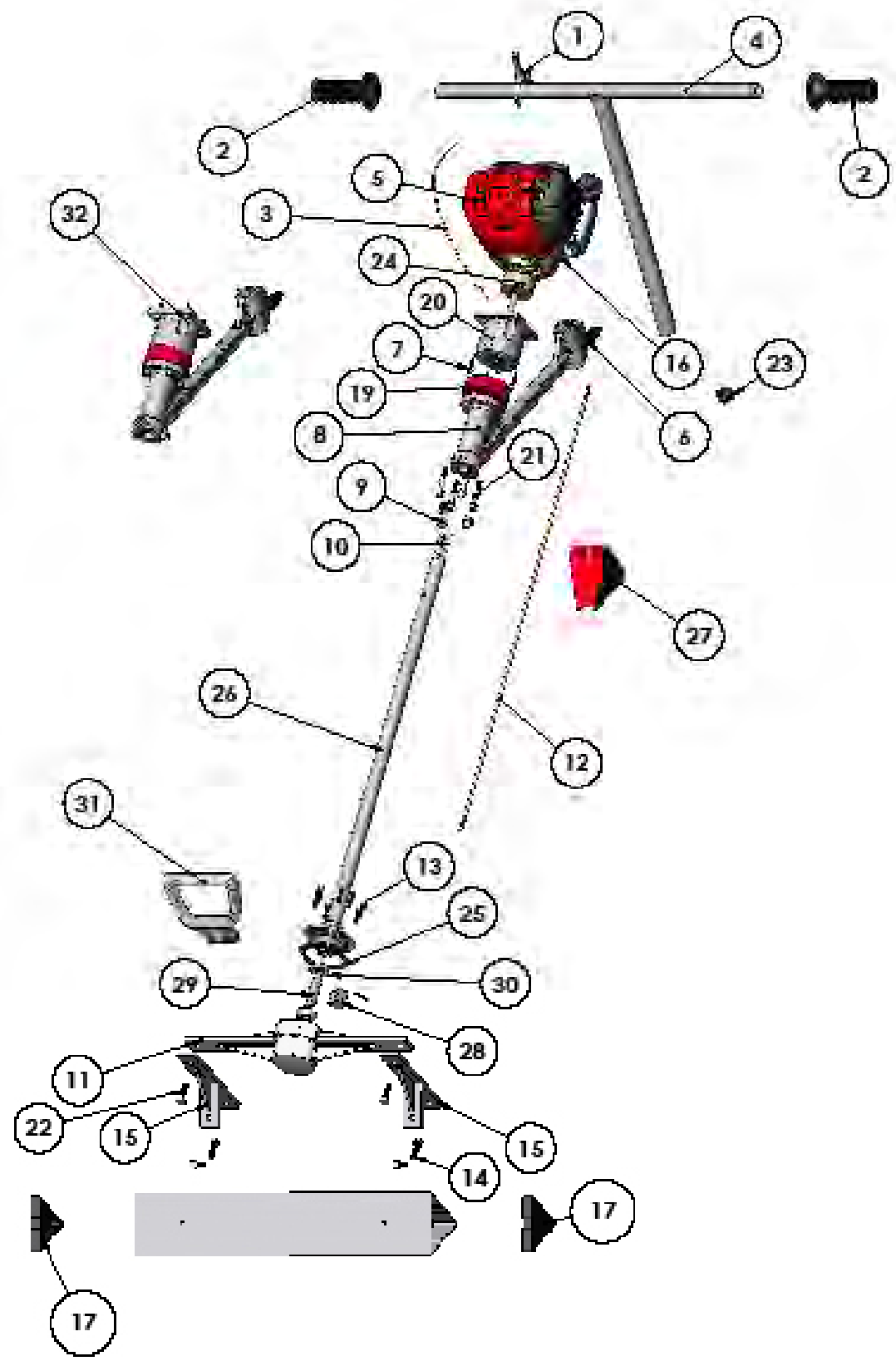


Screed Bull

Models: VSB70
VSB80



VIBRATORY SCREED





| Item | Part No. | Qty | Description | Descripción | Description | Descrizione |
|------|----------|-----|-----------------------------|--|--|---|
| 1 | 41096 | 1 | Lever Throttle VSB | Palanca de acelerador VSB | Manette des gaz VSB | Leva acceleratore VSB |
| 2 | 47125 | 2 | Grip Handle 1in Rubber | Empuñadura de manija, caucho de 1 in | Poignée en caoutchouc 1 in | Impugnatura gomma, 1 in |
| 3 | 41097 | 1 | Cable Throttle VSB | Cable de acelerador VSB | Câble de manette des gaz VSB | Cavo acceleratore VSB |
| 4 | 41098 | 1 | Handlebar VSB | Manillar VSB | Guidon VSB | Stegola VSB |
| 5 | 41099 | 1 | Engine Honda 1hp GX25 | Motor Honda 1 hp GX25 | Moteur Honda 1 hp GX25 | Motore Honda 1 hp GX25 |
| 6 | 41100 | 1 | Knob VSB | Perilla VSB | Bouton VSB | Manopola VSB |
| 7 | 41101 | 1 | Set Bolt Engine Mount VSB | Perno de fijación de montaje del motor VSB | Boulon de réglage de montage de moteur VSB | Vite di regolazione supporto motore VSB |
| 8 | 41133 | 1 | Support Motor VSB70 | Soporte de motor VSB70 | Support de moteur VSB70 | Supporto motore VSB70 |
| 9 | 41134 | 1 | Kit Set Screw VSB70 | Juego de tornillos de fijación VSB70 | Jeu de vis d'arrêt VSB70 | Kit viti di fermo VSB70 |
| 10 | 41135 | 1 | Star Liner VSB70 | Forro VSB70 | Chemise en étoile VSB70 | Rivestimento a stella VSB70 |
| 11 | 41136 | 1 | Housing Bearing Lower VSB70 | Caja de cojinetes inferiores VSB70 | Logement de roulement inférieur VSB70 | Alloggiamento cuscinetto inferiore VSB70 |
| 12 | 41137 | 1 | Flexshaft VSB70 | Eje flexible VSB70 | Arbre flexible VSB70 | Albero flessibile VSB70 |
| 13 | 41138 | 1 | Set Bolt Lower VSB70 | Perno de fijación inferior VSB70 | Boulon de réglage inférieur VSB70 | Vite di regolazione inferiore VSB70 |
| 14 | 41118 | 1 | Set Bolt Board Clamp VSB | Perno de fijación de abrazadera de plancha VSB | Boulon de réglage d'attache de table VSB | Vite di regolazione morsetto pannello VSB |
| 15* | 41120 | 2 | Clamp Saddle VSB | Abrazadera de soporte VSB | Bloqueur VSB | Morsetto a sella VSB |
| 16 | 41121 | 1 | Kill Switch VSB | Interruptor de parada de emergencia VSB | Interrupteur d'arrêt VSB | Interruttore di arresto VSB |
| 17 | 41122 | 2 | Cap End Board VSB | Tapa de extremo de plancha VSB | Capuchon d'extrémité de table VSB | Tappo terminale pannello VSB |
| 18^ | 80417 | 1 | Loctite 271-05 | Loctite 271-05 | Loctite 271-05 | Loctite 271-05 |
| 19 | 41139 | 1 | Isolator Vibration VSB70 | Aislador de vibración VSB70 | Isolateur de vibrations VSB70 | Smorzatore VSB70 |
| 20 | 41140 | 1 | Mount Motor VSB70 | Montaje de motor VSB70 | Montage de moteur VSB70 | Supporto motore VSB70 |
| 21 | 41141 | 1 | Set Bolt Motor Mount VSB70 | Perno de fijación de montaje del motor VSB70 | Boulon de réglage de montage de moteur VSB70 | Vite di regolazione supporto motore VSB70 |

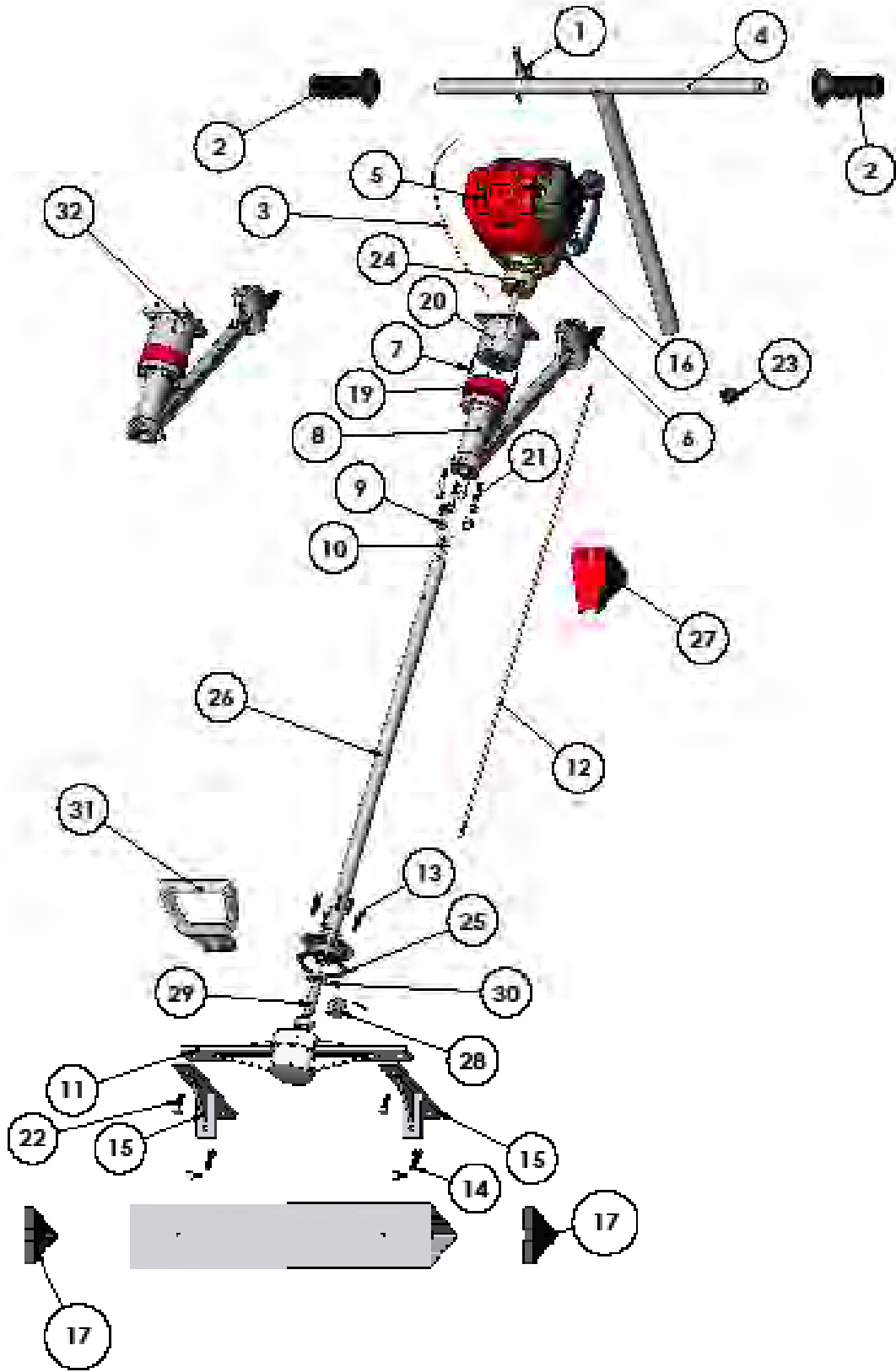
* Loctite 271-05

^ Not Shown

^ No se ilustra

^ Non représenté

^ Non illustrato





VSB70 (continued)
(continuación)
(suite)
(segue)

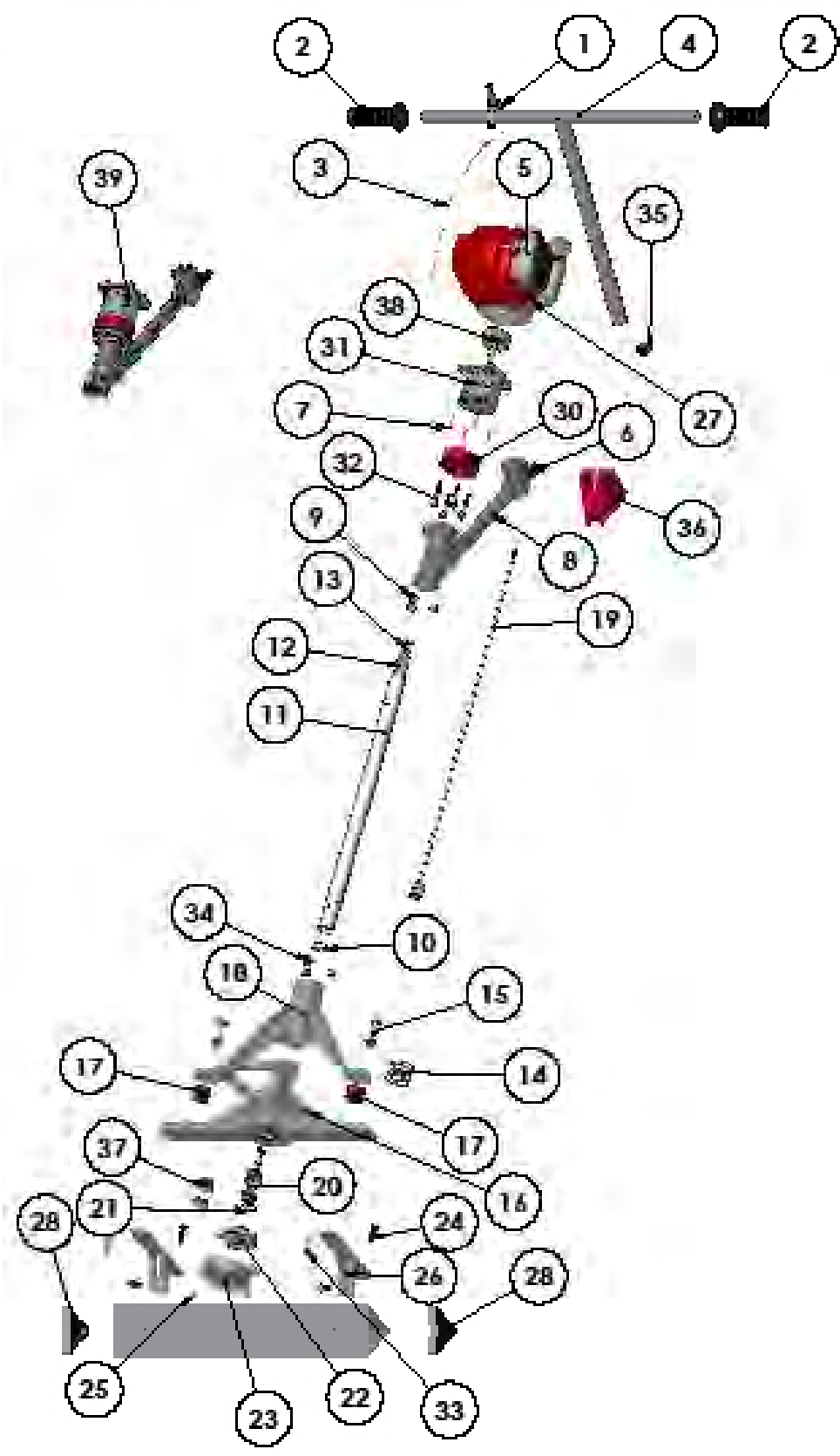
| | | | | | | |
|------|-------|---|-------------------------------------|--|-------------------------------------|--|
| 22 | 41126 | 1 | Set Bolt Saddle Clamp VSB | Perno de fijación de abrazadera de soporte VSB | Boulon de réglage de bloqueur VSB | Vite di regolazione morsetto a sella VSB |
| 23 | 41128 | 1 | Cap Plug Handlebar VSB | Tapón de manillar VSB | Chapeau de guidon VSB | Tappo stegola VSB |
| 24 | 41131 | 1 | Drum Clutch VSB | Tambor de embrague VSB | Tambour d'embrayage VSB | Tamburo frizione VSB |
| 25 | 41142 | 1 | Gasket Oil VSB70 | Empaquetadura de tubo de llenado de aceite VSB70 | Joint d'huile VSB70 | Guarnizione paraolio VSB70 |
| 26 | 41143 | 1 | Weld Tube Outer VSB70 | Pieza soldada de tubo exterior VSB70 | Tube soudé extérieur VSB70 | Tubo saldato esterno VSB70 |
| 27 | 41129 | 1 | Support Motor Mount VSB | Soporte de montaje del motor VSB | Support de montage de moteur VSB | Supporto motore VSB |
| 28 | 41144 | 1 | Weight Eccentric VSB70 | Peso de excéntrica VSB70 | Masse d'excentrique VSB70 | Peso eccentrico VSB70 |
| 29 | 41145 | 1 | Assembly Shaft Eccentric VSB70 | Conjunto de eje de excéntrica VSB70 | Arbre d'excentrique VSB70 | Gruppo albero eccentrico VSB70 |
| 30 | 41146 | 2 | Bearing Eccentric VSB70 | Cojinete de excéntrica VSB70 | Roulement d'excentrique VSB70 | Cuscinetto eccentrico VSB70 |
| 31 | 41147 | 1 | Handle Carry VSB70 | Manija de transporte VSB70 | Poignée de transport VSB70 | Maniglia di trasporto VSB70 |
| 32 | 41148 | 1 | Assembly Motor Mount Complete VSB70 | Conjunto completo de montaje del motor VSB70 | Montage de moteur complet VSB70 | Gruppo supporto motore completo VSB70 |
| 33a^ | 41082 | 1 | Board Screed VSB70 4FT | Plancha niveladora VSB70 4 ft | Table VSB70 4 ft | Pannello Screed VSB70 4 ft |
| 33b^ | 41083 | 1 | Board Screed VSB70 6FT | Plancha niveladora VSB70 6 ft | Table VSB70 6 ft | Pannello Screed VSB70 6 ft |
| 33c^ | 41084 | 1 | Board Screed VSB70 8FT | Plancha niveladora VSB70 8 ft | Table VSB70 8 ft | Pannello Screed VSB70 8 ft |
| 33d^ | 41085 | 1 | Board Screed VSB70 10FT | Plancha niveladora VSB70 10 ft | Table VSB70 10 ft | Pannello Screed VSB70 10 ft |
| 33e^ | 41086 | 1 | Board Screed VSB70 12FT | Plancha niveladora VSB70 12 ft | Table VSB70 12 ft | Pannello Screed VSB70 12 ft |
| 34^ | 41094 | 1 | Kit Screed Strap Joining | Juego de pletinas de unión de niveladora | Kit d'attache d'assemblage de table | Kit cinghia di collegamento Screed |
| 35^ | 41095 | 1 | Kit Screed Board Extension 4FT | Juego de extensión de plancha niveladora de 4 ft | Kit d'extension de table 4 ft | Kit prolunga pannello Screed 4 ft |

^ Not Shown

^ No se ilustra

^ Non représenté

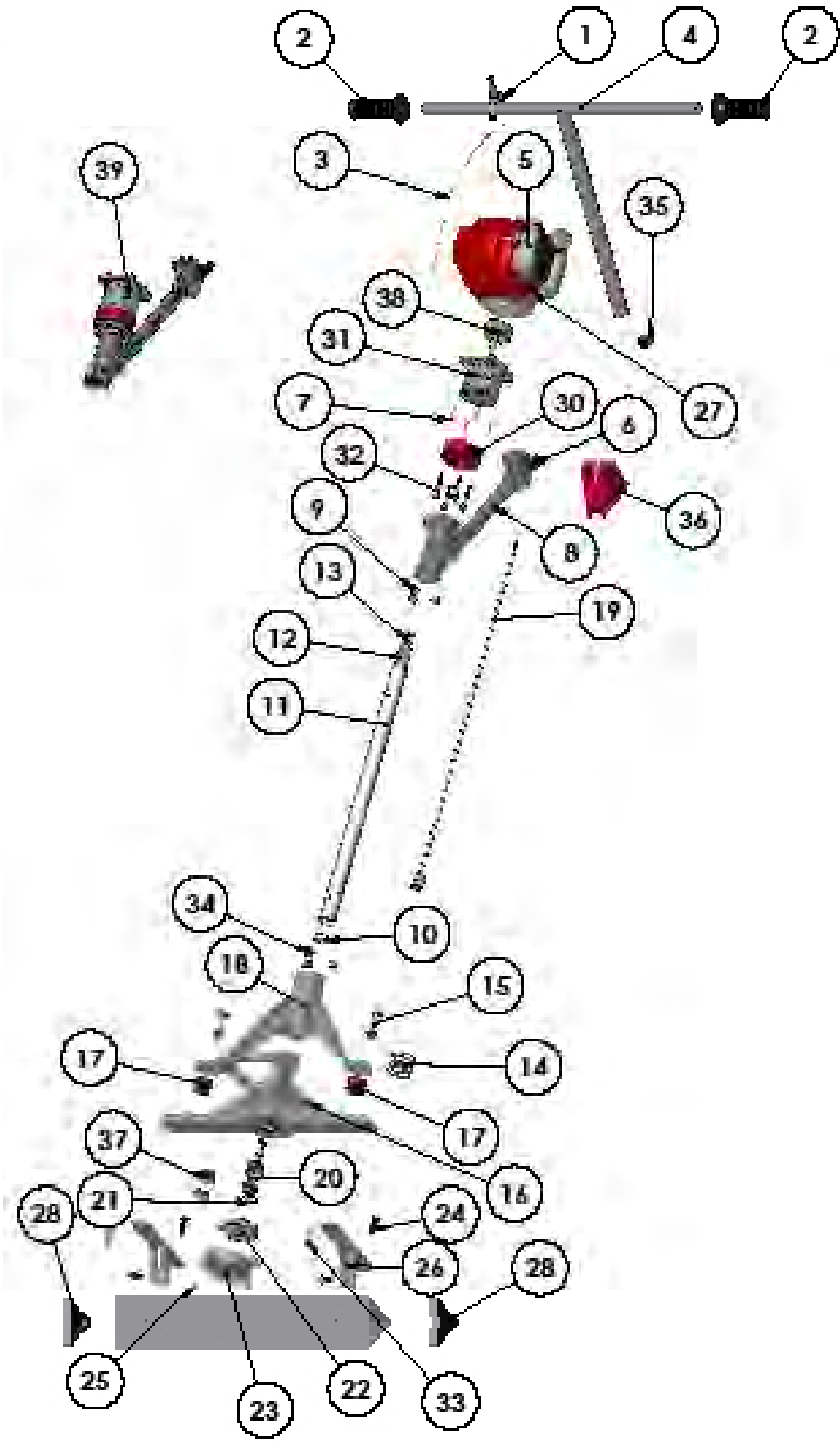
^ Non illustrato





| Item | Part No. | Qty | Description | Descripción | Description | Descrizione |
|------|----------|-----|------------------------------|--|---|---|
| 1 | 41096 | 1 | Lever Throttle VSB | Palanca de acelerador VSB | Manette des gaz VSB | Leva acceleratore VSB |
| 2 | 47125 | 2 | Grip Handle 1in Rubber | Empuñadura de manija, caucho de 1 in | Poignée en caoutchouc 1 in | Impugnatura 1 in gomma |
| 3 | 41097 | 1 | Cable Throttle VSB | Cable de acelerador VSB | Câble de manette des gaz VSB | Cavo acceleratore VSB |
| 4 | 41098 | 1 | Handlebar VSB | Manillar VSB | Guidon VSB | Stegola VSB |
| 5 | 41099 | 1 | Engine Honda 1hp GX25 | Motor Honda 1 hp GX25 | Moteur Honda 1 hp GX25 | Motore Honda 1 hp GX25 |
| 6 | 41100 | 1 | Knob VSB | Perilla VSB | Bouton VSB | Manopola VSB |
| 7 | 41101 | 1 | Set Bolt Engine Mount VSB | Perno de fijación de montaje del motor VSB | Boulon de réglage de montage de moteur VSB | Vite di regolazione supporto motore VSB |
| 8 | 41102 | 1 | Support Motor VSB80 | Soporte de motor VSB80 | Support de moteur VSB80 | Supporto motore VSB80 |
| 9 | 41103 | 1 | Kit Set Screw VSB80 | Juego de tornillos de fijación VSB80 | Jeu de vis d'arrêt VSB80 | Kit viti di fermo VSB80 |
| 10 | 41104 | 1 | Bushing Outer Tube VSB80 | Buje de tubo exterior VSB80 | Bague de tube extérieur VSB80 | Boccola tubo esterno VSB80 |
| 11 | 41105 | 1 | Tube Outer Stainless VSB80 | Tubo exterior inoxidable VSB80 | Tube extérieur en acier inoxydable VSB80 | Tubo esterno acciaio inox VSB80 |
| 12 | 41106 | 1 | Liner Tube Aluminum VSB80 | Forro de tubo de aluminio VSB80 | Chemise de tube en aluminium VSB80 | Rivestimento tubo alluminio VSB80 |
| 13 | 41107 | 1 | Star Liner VSB80 | Forro VSB80 | Chemise en étoile VSB80 | Rivestimento a stella VSB80 |
| 14 | 41108 | 1 | Set O-Ring 326 VSB80 | Anillo "O" 326 VSB80 | Jeu de joints toriques 326 VSB80 | O-ring di fermo 326 VSB80 |
| 15 | 41109 | 1 | Set Bolt Shock Mount VSB80 | Perno de fijación de amortiguador VSB80 | Boulon de réglage de monture antichoc VSB80 | Vite di regolazione supporto smorzatore VSB80 |
| 16 | 41110 | 1 | Housing Eccentric VSB80 | Caja de excéntrica VSB80 | Logement d'excentrique VSB80 | Alloggiamento eccentrico VSB80 |
| 17 | 41111 | 1 | Set Shock Absorber VSB80 | Juego de amortiguador VSB80 | Jeu d'amortisseurs VSB80 | Ammortizzatore VSB80 |
| 18 | 41112 | 1 | Casing Lower VSB80 | Pieza fundida inferior VSB80 | Carter inférieur VSB80 | Struttura inferiore VSB80 |
| 19 | 41113 | 1 | Flexshaft with Coupler VSB80 | Eje flexible con acoplador VSB80 | Arbre flexible avec accouplement VSB80 | Albero flessibile con raccordo VSB80 |
| 20 | 41114 | 1 | Shaft Drive Short VSB80 | Eje motriz corto VSB80 | Arbre d'entraînement court VSB80 | Albero conduttore corto VSB80 |
| 21 | 41115 | 1 | Ring Ret Ext 1-5/16in ID Bk | Anillo ext. retenedor 1-5/16 in DI | Anneau ret. ext. 1-5/16 in diam. int. noir | Anello di bloccaggio esterno Di 1-5/16 in |
| 22 | 41116 | 1 | Weight Eccentric VSB80 | Peso de excéntrica VSB80 | Masse d'excentrique VSB80 | Peso eccentrico VSB80 |
| 23 | 41117 | 1 | Cover Housing End VSB80 | Cubierta de extremo de caja VSB80 | Protection d'extrémité de logement VSB80 | Coperchio terminale alloggiamento VSB80 |
| 24* | 41118 | 1 | Set Bolt Board Clamp VSB | Perno de fijación de abrazadera de plancha VSB | Boulon de réglage d'attache de table VSB | Vite di regolazione morsetto pannello VSB |

* Loctite 271-05





VSB80 (continued)
 (continuación)
 (suite)
 (segue)

| | | | | | | |
|------|-------|---|-------------------------------------|---|--|---|
| 25 | 41119 | 1 | Set Bolt End Cover VSB80 | Perno de fijación de cubierta de extremo VSB80 | Boulon de réglage de protection d'extrémité VSB80 | Vite di regolazione coperchio terminale VSB80 |
| 26 | 41120 | 2 | Clamp Saddle VSB | Abrazadera de soporte VSB | Bloqueur VSB | Morsetto a sella VSB |
| 27 | 41121 | 1 | Kill Switch VSB | Interruptor de parada de emergencia VSB | Interrupteur d'arrêt VSB | Interruttore di arresto VSB |
| 28 | 41122 | 2 | Cap End Board VSB | Tapa de extremo de plancha VSB | Capuchon d'extrémité de table VSB | Tappo terminale pannello VSB |
| 29^ | 80417 | 1 | Loctite 271-05 | Loctite 271-05 | Loctite 271-05 | Loctite 271-05 |
| 30 | 41123 | 1 | Isolator Vibration VSB80 | Aislador de vibración VSB80 | Isolateur de vibrations VSB80 | Smorzatore VSB80 |
| 31 | 41124 | 1 | Mount Motor VSB80 | Montaje de motor VSB80 | Montage de moteur VSB80 | Supporto motore VSB80 |
| 32 | 41125 | 1 | Set Bolt Motor Mount VSB80 | Perno de fijación de montaje del motor VSB80 | Boulon de réglage de montage de moteur VSB80 | Vite di regolazione supporto motore VSB80 |
| 33 | 41126 | 1 | Set Bolt Saddle Clamp VSB | Perno de fijación de abrazadera de soporte VSB | Boulon de réglage de bloqueur VSB | Vite di regolazione morsetto a sella VSB |
| 34 | 41127 | 1 | Set Bolt Casting Lower VSB80 | Perno de fijación de pieza fundida inferior VSB80 | Boulon de réglage de pièce coulée inférieure VSB80 | Vite di regolazione struttura inferiore VSB80 |
| 35 | 41128 | 1 | Cap Plug Handlebar VSB | Tapón de manillar VSB | Chapeau de guidon VSB | Tappo stegola VSB |
| 36 | 41129 | 1 | Support Motor Mount VSB | Soporte de montaje del motor VSB | Support de montage de moteur VSB | Supporto motore ausiliario VSB |
| 37 | 41130 | 1 | Set Bearing Eccentric VSB80 | Juego de cojinetes de excéntrica VSB80 | Jeu de roulements d'excentrique VSB80 | Cuscinetto eccentrico VSB80 |
| 38 | 41131 | 1 | Drum Clutch VSB | Tambor de embrague VSB | Tambour d'embrayage VSB | Tamburo frizione VSB |
| 39 | 41132 | 1 | Assembly Motor Mount Complete VSB80 | Conjunto completo de montaje del motor VSB80 | Montage de moteur complet VSB80 | Gruppo supporto motore completo VSB80 |
| 40a^ | 41087 | 1 | Board Screed VSB80 4FT | Plancha niveladora VSB80 4 ft | Table VSB80 4 ft | Pannello Screed VSB80 4 ft |
| 40b^ | 41088 | 1 | Board Screed VSB80 6FT | Plancha niveladora VSB80 6 ft | Table VSB80 6 ft | Pannello Screed VSB80 6 ft |
| 40c^ | 41089 | 1 | Board Screed VSB80 8FT | Plancha niveladora VSB80 8 ft | Table VSB80 8 ft | Pannello Screed VSB80 8 ft |
| 40d^ | 41090 | 1 | Board Screed VSB80 10FT | Plancha niveladora VSB80 10 ft | Table VSB80 10 ft | Pannello Screed VSB80 10 ft |
| 40e^ | 41091 | 1 | Board Screed VSB80 12FT | Plancha niveladora VSB80 12 ft | Table VSB80 12 ft | Pannello Screed VSB80 12 ft |
| 40f^ | 41092 | 1 | Board Screed VSB80 14FT | Plancha niveladora VSB80 14 ft | Table VSB80 14 ft | Pannello Screed VSB80 14 ft |
| 40g^ | 41093 | 1 | Board Screed VSB80 16FT | Plancha niveladora VSB80 16 ft | Table VSB80 16 ft | Pannello Screed VSB80 16 ft |
| 41^ | 41094 | 1 | Kit Screed Strap Joining | Juego de pletinas de unión de niveladora | Kit d'attache d'assemblage de table | Kit cinghia di collegamento Screed |
| 42^ | 41095 | 1 | Kit Screed Board Extension 4FT | Juego de extensión de plancha niveladora de 4 ft | Kit d'extension de table 4 ft | Kit prolunga pannello Screed 4 ft |

^ Not shown



1



⚠ WARNING

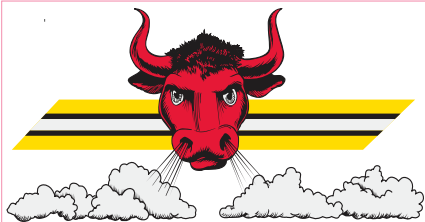
- Read and understand operator's manual before using this machine.
- Follow safety and alert symbols and warnings.
- Open flame, fire and smoking prohibited.
- Do not operate in unventilated area.
- Hearing protection required.
- Stop engine before refueling.
- Check engine oil level before starting.
- Use unleaded gasoline, octane rating of 86 or higher.

⚠ ADVERTENCIA

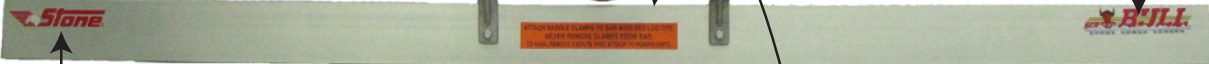
- Lea y entienda el manual del operador antes de usar esta máquina.
- Siga los símbolos y advertencias de seguridad y alerta.
- Está prohibido prender fuego, exponer a las flamas y fumar.
- No haga funcionar en ambientes carentes de ventilación.
- Se requiere protección para los oídos.
- Detenga el motor antes de suministrar combustible.
- Compruebe el nivel de aceite del motor antes de empezar.
- Utilice gasolina sin plomo de 86 octanos o superior.

On handle, facing operator

5



2



4



3a

VSB70

or

3b

VSB80

On rear of board between saddle clamps



DECALS
ETIQUETAS
AUTOCOLLANTS
ADESIVI

| Item | Part No. | Qty | Description | Descripción | Description | Descrizione |
|------|----------|-----|---------------------------|--|--|--------------------------------------|
| 1 | 55729 | 1 | Decal Warning Read Manual | Etiqueta - Advertencia, leer el manual | Autocollant d'avertissement - lire le manuel | Adesivo avvertenza - leggere manuale |
| 2 | 55751 | 1 | Decal Screed Bull | Etiqueta - Screed Bull | Autocollant Screed Bull | Adesivo Screed Bull |
| 3a | 55753 | 1 | Decal VSB70 | Etiqueta - VSB70 | Autocollant VSB70 | Adesivo VSB70 |
| 3b | 55754 | 1 | Decal VSB80 | Etiqueta - VSB80 | Autocollant VSB80 | Adesivo VSB80 |
| 4 | 55116 | 1 | Decal Stone Eagle 8.5in | Etiqueta - Stone Eagle, 8.5 in. | Autocollant Stone Eagle 8.5 in | Adesivo Stone Eagle 8.5 in |
| 5 | 55752 | 1 | Decal Bull Head | Etiqueta Bull Head | Autocollant Bull Head | Adesivo Bull Head |